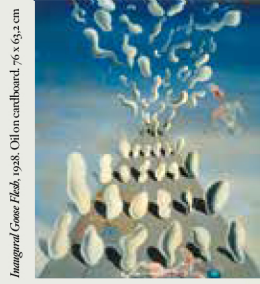
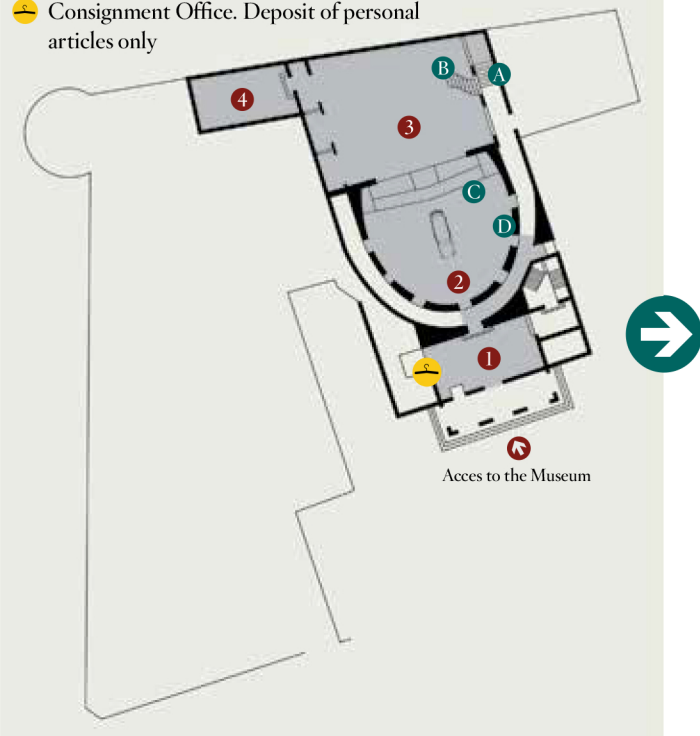


# COURTYARD AND STAGE



- 1 Lobby
- 2 Courtyard
- 3 Stage - Cupola
- 4 The Treasure Room: Works by Salvador Dalí

- A Down to the Ground Floor (Rooms 5 to 9)
- B Up to the 1st Floor (Rooms 10 to 22)
- C Up to the Stage (Room 3)
- D Access to the Courtyard
- Consignment Office. Deposit of personal articles only

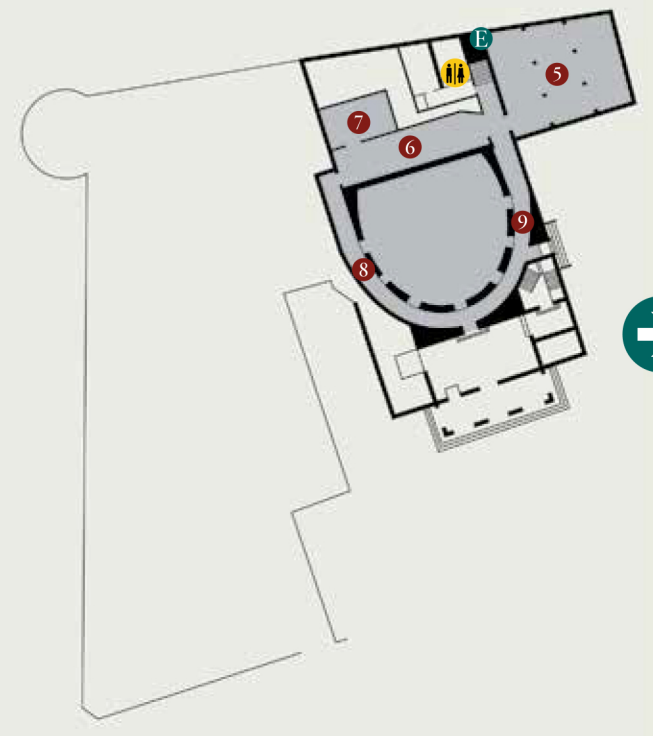


# GROUND FLOOR AND BELOW STAGE

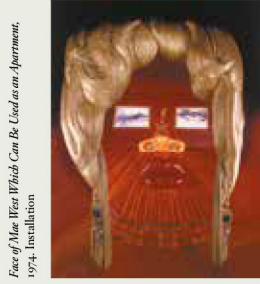


- 5 Fishmonger's Hall: Works by Salvador Dalí
- 6 Temporary exhibition "Teatre-Museu Dalí: a living organism"
- 7 Crypt: The tomb of Salvador Dalí
- 8 Corridor: Works by Evarist Vallès
- 9 Corridor: Installation and graphic art by Salvador Dalí

- E Up to the Stage in order to go to the 1st Floor (Rooms 10 to 22)
- Toilets

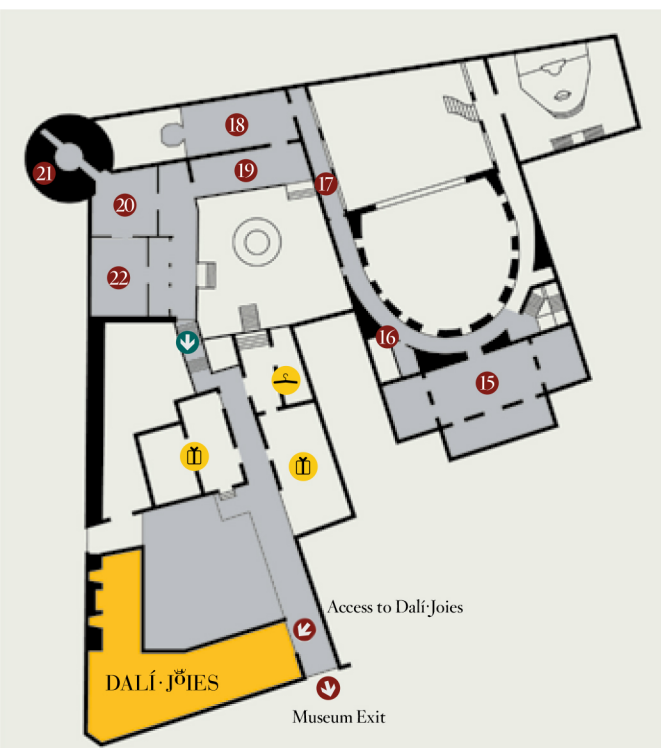


# FIRST FLOOR (FIRST PART)



- 10 Corridor: installation by Salvador Dalí
- 11 Mae West Room

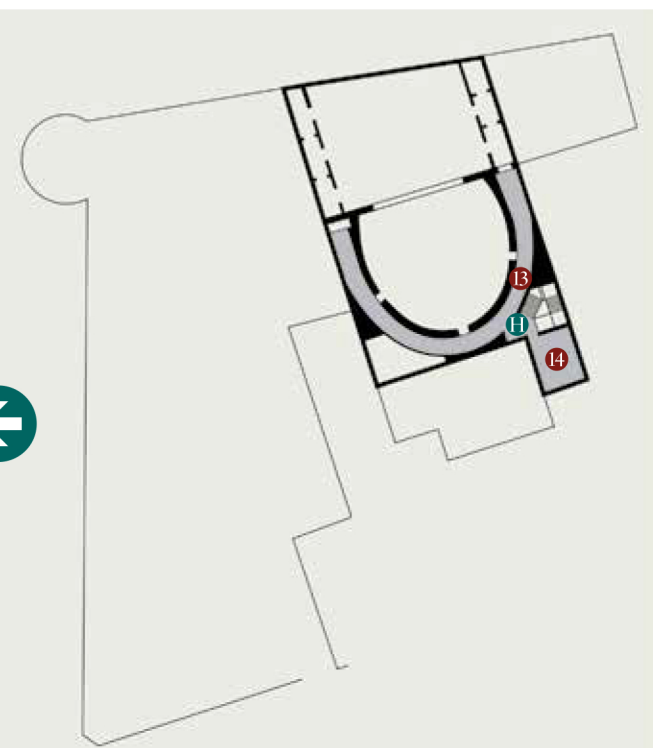
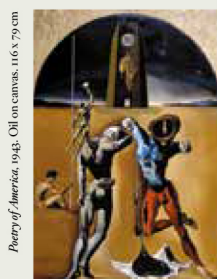
- F Up to the 2nd and 3rd floors (Rooms 12, 13 and 14)



- 15 "Palace of the Wind" Room: works by Salvador Dalí
- 16 "Poetry of America" Room: works by Salvador Dalí
- 17 Corridor: installation by Salvador Dalí
- 18 "Bramante's Temple" Room: installation by Salvador Dalí
- 19 Loggia: temporary exhibition "The soft photographic apparatus"
- 20 Room 1 of the loggia: temporary exhibition "My favorite painters"
- 21 "The tower of All the Enigmas" (temporary closed)
- 22 Room 2 of the loggia: temporary exhibition "My favorite painters"

- Down to the exit
- Consignment Office. Only for the collection of personal articles
- Shop

# FIRST FLOOR (SECOND PART) AND EXIT



- 13 "Rue Trajan" corridor: works and installation by Salvador Dalí
- 14 Masterpiece Room: part of the private art collection of Salvador Dalí

- H Access to Rooms 13 and 14  
Down to the 1st floor

# THIRD FLOOR



- 12 Area with works by Antoni Pitxot preceded by an installation by Salvador Dalí

- G Access to Room 12  
Up to the 3rd floor (Rooms 13 and 14)

# SECOND FLOOR

