

Cat. no. OE 12

Untitled. Automatic object

Unique Original Work



© Salvador Dalí, Fundació Gala-Salvador Dalí, VEGAP, Figueres, 2019 Brassai © Estate Brassai-RMN-Grand Palais

Author:	Salvador Dalí i Domènech - Gyula Halász, alias Brassai
Date:	ca. 1933
Technique:	Photograph and found object or object of automatic origin Gelatin silver print
Dimensions:	23,6 x 17,7 cm The dimensions correspond to the original print run of the photograph
Inscriptions:	Letter from Salvador Dalí to Brassai on the back
Location:	Centre Pompidou - Musée national d'art moderne - Centre de création industrielle, Paris



Description

Between 1932-1933, Dalí took on the artistic direction of a series of photographs made with Gyula Halász, alias Brassai (1899-1984), in which certain objects, probably of automatic origin, acquire a new conceptual and artistic dimension, grounded in the essence of the photographic image. Several of these photographs were published anonymously in 1933 in the magazine *Minotaure*, under the heading 'Sculptures involontaires', each with a descriptive title drawing attention to details of the work. A number of these photographs that were not made public at the time constitute further examples of this type of creation. This is the case of this photograph, conserved in the Centre de création industrielle at the Pompidou Centre in Paris, on the back of which there is a handwritten letter from Dalí to Brassai with specific instructions concerning the creation of certain automatic objects.

Observations

The dimensions and inscriptions correspond to the original drawing of this photograph, which is conserved in the Centre de création industrielle de Paris.

Bibliography

- Brassai, Centre Pompidou, Seuil, Paris, 2000, pp. 134, 317, ill., indirect image
- *La Subversion des images : surréalisme, photographie, film*, Centre Pompidou, Paris, 2009, pp. 347, 461, ill., indirect image
- Didier Ottinger, *Dictionnaire de l'objet surréaliste*, Gallimard, Centre Pompidou, Paris, 2013, pp. [245], 246, [307], ill. (reversed image)
- Anna Dezeuze, Julia Kelly, *Found sculpture and photography from surrealism to contemporary art*, Ashgate, Farnham, UK, Burlington, VT, 2013, pp. 5-9, [13]-18, 30, 99-102

Related works



© Salvador Dalí, Fundació Gala-Salvador Dalí, VEGAP, Figueres, 2019 Brassai © Estate Brassai-RMN-Grand Palais

Cat. no. OE 3

«Symmetrically» rolled-up bus ticket, forming a rare mechanism of automatism with evident germs of stereotypes

1932-1933



© Salvador Dalí, Fundació Gala-Salvador Dalí, VEGAP, Figueres, 2019 © Estate Brassai Succession

Cat. no. OE 4

Ornamental Modern Style bread escapes the soft stereotype

1932-1933



© Salvador Dalí, Fundació Gala-Salvador Dalí, VEGAP, Figueres, 2019 Brassai © Estate Brassai-RMN-Grand Palais

Cat. no. OE 5

Piece of soap presenting Modern Style automatic shapes, found in a washbasin

1932-1933

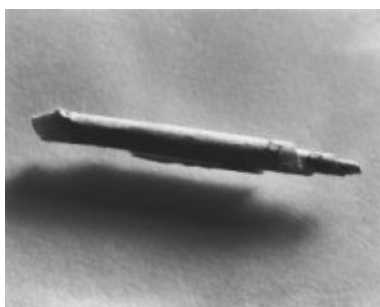


© Salvador Dalí, Fundació Gala-Salvador Dalí, VEGAP, Figueres, 2019 © Estate Brassai Succession - Philippe Ribeyrolles

Cat. no. OE 6

The morphological accident of the squeezed toothpaste does not escape the fine ornamental stereotype

1932-1933

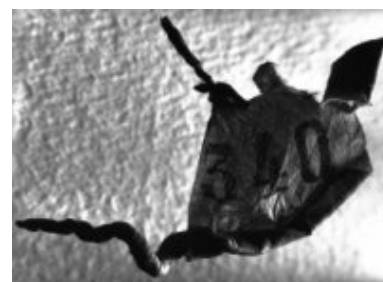


© Salvador Dalí, Fundació Gala-Salvador Dalí, VEGAP, Figueres, 2019 © Estate Brassai Succession - Philippe Ribeyrolles

Cat. no. OE 7

Elementary rolling-up obtained from a «mental defective»

1932-1933



© Salvador Dalí, Fundació Gala-Salvador Dalí, VEGAP, Figueres, 2019 © Estate Brassai Succession - Philippe Ribeyrolles

Cat. no. OE 8

Rolled-up bus ticket, found in the pocket of an average bureaucrat (Crédit Lyonnais); the most frequent characteristics of «Modern Style»

1932-1933



© Salvador Dalí, Fundació Gala-Salvador Dalí, VEGAP, Figueres, 2019 Brassai © Estate Brassai-RMN-Grand Palais

Cat. no. OE 9

The Envelope

ca. 1933



© Salvador Dalí, Fundació Gala-Salvador Dalí, VEGAP, Figueres, 2019 Brassai © Estate Brassai-RMN-Grand Palais

Cat. no. OE 10

Untitled. Automatic object

ca. 1933



© Salvador Dalí, Fundació Gala-Salvador Dalí, VEGAP, Figueres, 2019 Brassai © Estate Brassai-RMN-Grand Palais

Cat. no. OE 11

Piece of cotton wool instantly rolled up and abandoned (category of «aborted automatism»)

ca. 1933



© Salvador Dalí, Fundació Gala-Salvador Dalí, VEGAP, Figueres, 2019 Brassai © Estate Brassai-RMN-Grand Palais

Cat. no. OE 13

Shell

ca. 1933

Reproduction Rights

The copyright on Salvador Dalí's works, included those that are reproduced in this Web page, is held by the Spanish State and has been granted in exclusivity to the Fundació Gala-Salvador Dalí.

Pursuant to intellectual property laws in force, the total or partial reproduction, distribution, transformation, public communication, interactively making available to the public, as well as any other exploitation, by any means, of the works included in this Web page is prohibited.

Any exploitation of Salvador Dalí's works is subject to the prior application and clearance of the relevant licence issued by VEGAP (tel. 91 532 66 32 and 93 201 03 31 ; www.vegap.es). Copyright infringement will be prosecuted according to Laws.