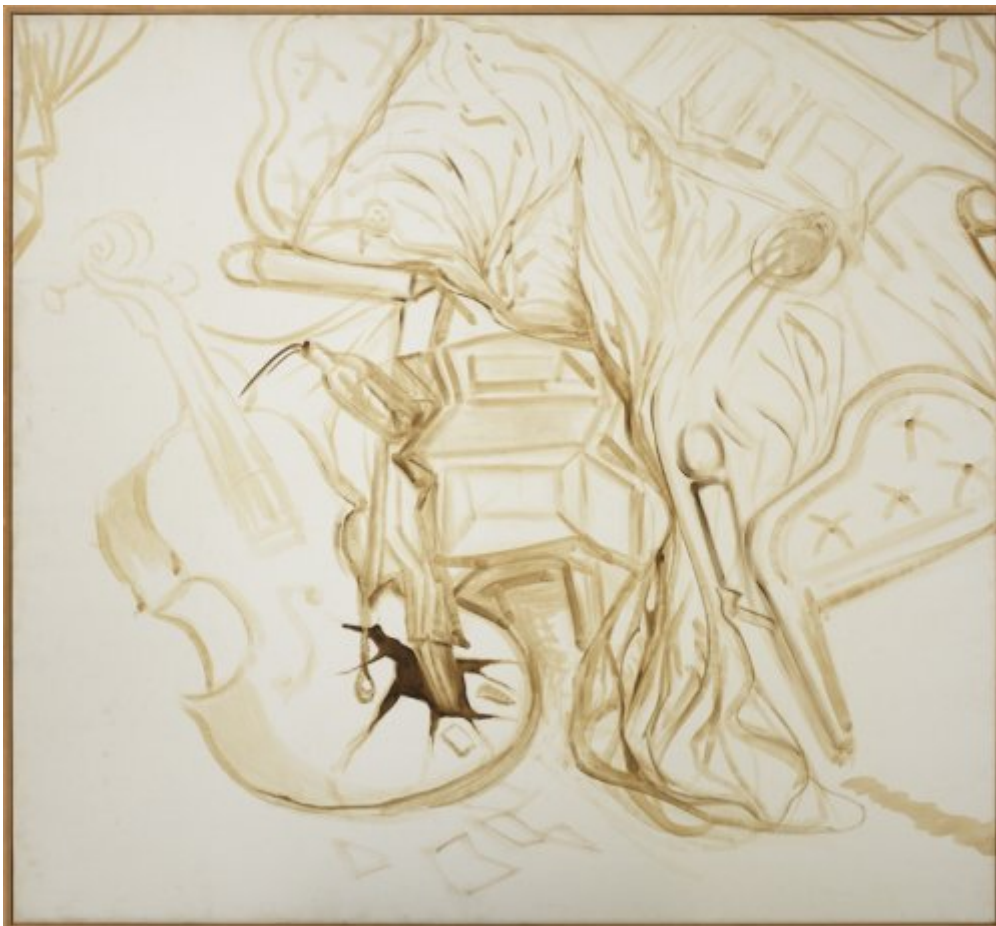




FUNDACIÓ
GALA-SALVADOR DALÍ



© Salvador Dalí, Fundació Gala-Salvador Dalí, Figueres, 2017

Cat. no. P 999

Bed and Two Bedside Tables Ferociously Attacking a Cello

Date: c. 1983
Technique: Oil on canvas
Dimensions: 130 x 140 cm
Signature: Unsigned and undated
Location: Fundació Gala-Salvador Dalí, Figueres. Dalí bequest



Provenance

- Artist's collection

Exhibitions

- 1984, Ferrara, Palazzo dei Diamanti, *I Dalí di Salvador Dalí*, 01/07/1984 - 30/09/1984, cat. no. 76
- 1984, [Aalborg], Husets Galleri, *Salvador Dalí, Pitxot, Evarist Vallès*, 25/05/1984 - 28/06/1984, cat. no. 6
- 1989, Humlebaek, Louisiana Museum of Modern Art, *Salvador Dalí*, 16/12/1989 - 11/03/1990, cat. no. 74
- 1993, Sevilla, Fundación Fondo de Cultura de Sevilla, *Dalí en los fondos de la Fundación Gala-Salvador Dalí*, 27/04/1993 - 04/07/1993, no reference

Bibliography

- *Salvador Dalí, Pitxot, Evarist Vallès*, Husets Galleri, [Aalborg], 1984, p. 27
- *I Dalí di Salvador Dalí*, Gianni Tassinari, Ferrara, 1984, p. 222
- *Dalí en los fondos de la Fundación Gala-Salvador Dalí*, Fundación Fondo de Cultura, Sevilla, 1993, p. 133
- Robert Descharnes, Gilles Néret, *Salvador Dalí, 1904 -1989*, Benedikt Taschen, Köln, 1994, p. 715
- Silvia Borghesi, *Dalí*, Electa, Milán, 2004, p. 119

Reproduction Rights

The copyright on Salvador Dalí's works, included those that are reproduced in this Web page, is held by the Spanish State and has been granted in exclusivity to the Fundació Gala-Salvador Dalí.

Pursuant to intellectual property laws in force, the total or partial reproduction, distribution, transformation, public communication, interactively making available to the public, as well as any other exploitation, by any means, of the works included in this Web page is prohibited.

Any exploitation of Salvador Dalí's works is subject to the prior application and clearance of the relevant licence issued by VEGAP (tel. 91 532 66 32 and 93 201 03 31 ; www.vegap.es). Copyright infringement will be prosecuted according to Laws.