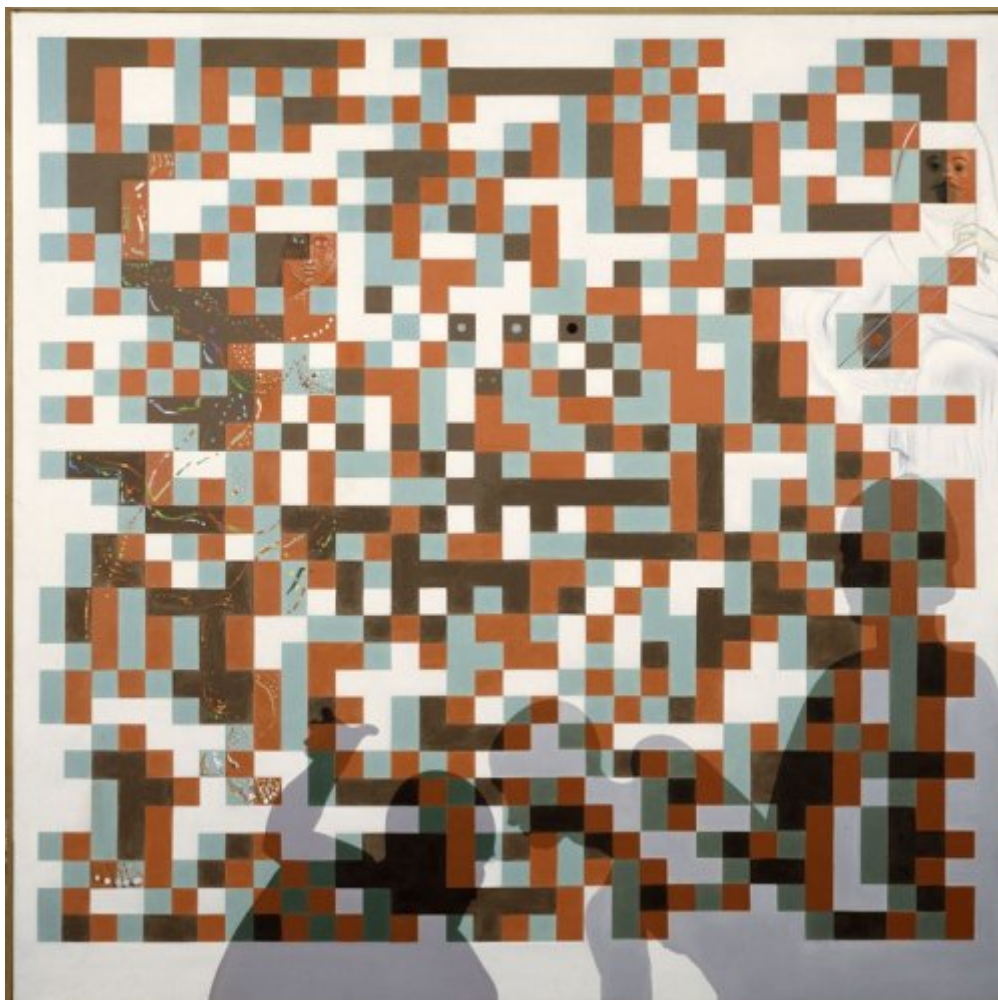




FUNDACIÓ
GALA-SALVADOR DALÍ



© Salvador Dalí, Fundació Gala-Salvador Dalí, Figueres, 2017

Cat. no. P 900

Odalisque cybernétique (Cybernetic Odalisque)

Date: c. 1978
Technique: Oil on canvas
Dimensions: 200 x 200 cm
Signature: Unsigned and undated



Location: Fundació Gala-Salvador Dalí, Figueres. Dalí bequest



Provenance

- Artist's collection

Exhibitions

- 1979, Paris, Centre Georges Pompidou, Musée National d'Art Moderne, *Salvador Dalí: rétrospective, 1920-1980*, 18/12/1979 - 21/04/1980, cat. no. 341
- 1980, London, The Tate Gallery, *Salvador Dalí*, 14/05/1980 - 29/06/1980, cat. no. 242
- 1983, Madrid, Museo Español de Arte Contemporáneo, *400 obras de Salvador Dalí del 1914 al 1983*, 15/04/1983 - 29/05/1983, cat. no. 439
- 1984, Ferrara, Palazzo dei Diamanti, *I Dalí di Salvador Dalí*, 01/07/1984 - 30/09/1984, cat. no. 51
- 1985, Charleroi, Palais des Beaux Arts, *Picasso, Miró, Dalí : évocations d'Espagne*, 26/09/1985 - 22/12/1985, cat. no. 42

Bibliography

- *Salvador Dalí: rétrospective, 1920-1980*, Centre Georges Pompidou, Musée National d'Art moderne, Paris, 1979, p. 402
- *Catálogo museo español de arte contemporáneo 1983*, Ministerio de Cultura. Dirección General de Bellas Artes y Archivos, [Madrid], 1983, n. p. (indirect image)
- "Hoy se inaugura la gran exposición de Dalí", *Abc*, 15/04/1983, Madrid, p. 9 (indirect image) (detail)
- "Dalí, el gran absent en la inauguració de la seva antològica, recordà ahir Gala", *El Punt*, 11/06/1983, Girona, p. 3 (indirect image) (detail)
- Josep M^e V. Bernils, "Montaje de la «mini-antológica» de Dalí en el Teatro-Museo", *Los Sitios*, 09/08/1983, Girona, p. 7 (indirect image) (detail)
- "L'Antològica arriba a Figueres amb el nom «Dalí 1923-1983»", *El Punt*, 12/08/1983, Girona, p. 3 (indirect image) (detail)
- "Relació de les obres que seran exposades a Figueres", *Los Sitios*, 14/08/1983, Girona, p. 7 (indirect image) (detail)
- *I Dalí di Salvador Dalí*, Gianni Tassinari, Ferrara, 1984, p. 171
- *Picasso, Miró, Dalí : évocations d'Espagne*, Palais des Beaux-Arts. Europalia 85 España, Charleroi, 1985, p. 249
- *Salvador Dalí, 1904-1989*, Gerd Hatje, Stuttgart, 1989, p. XXXI
- *Los Dalís de Dalí: colección del museo nacional centro de arte reina Sofía*, Centro cultural, Arte contemporáneo, México D. F., 1990, p. 43
- Robert Descharnes, Gilles Néret, *Salvador Dalí, 1904 -1989*, Benedikt Taschen, Köln, 1994, p. 671
- *Les Essentiels de l'art Dalí*, Ludion, Amsterdam, 2003, p. 278
- *The Portable Dalí*, Universe, New York, 2003, p. 378
- *Dalimitar : artistes als límits de la dalinitat*, Ajuntament de Figueres, Consorci del Museu de l'Empordà, Figueres, Figueres, 2004, p. 48
- *Lo[s] Cinético[s]*, Museo Nacional Centro de Arte Reina Sofía, Bancaja, Madrid, [Madrid], 2007, p. 24
- *Salvador Dalí : the late work*, High Museum of Art, Yale University Press, Atlanta, New Haven and London, 2010, p. 48
- Gabriel Montua, *Dalís 20. Jahrhundert : die westliche Kunst zwischen Politik, Markt und Medien*, De Gruyter, Boston, Berlin, 2015, il. XLI



Reproduction Rights

The copyright on Salvador Dalí's works, included those that are reproduced in this Web page, is held by the Spanish State and has been granted in exclusivity to the Fundació Gala-Salvador Dalí.

Pursuant to intellectual property laws in force, the total or partial reproduction, distribution, transformation, public communication, interactively making available to the public, as well as any other exploitation, by any means, of the works included in this Web page is prohibited.

Any exploitation of Salvador Dalí's works is subject to the prior application and clearance of the relevant licence issued by VEGAP (tel. 91 532 66 32 and 93 201 03 31 ; www.vegap.es). Copyright infringement will be prosecuted according to Laws.