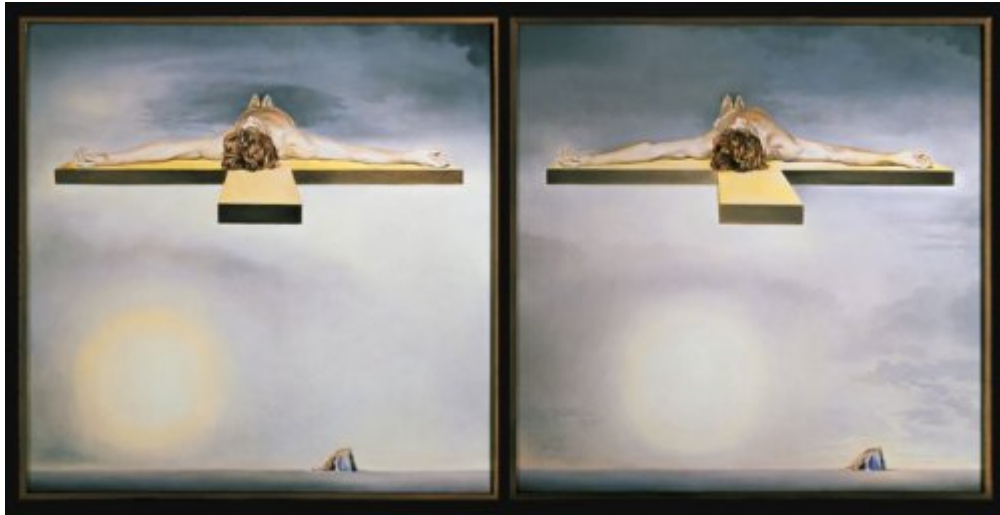




FUNDACIÓ  
GALA-SALVADOR DALÍ



© Salvador Dalí, Fundació Gala-Salvador Dalí, Figueres, 2017

**Cat. no. P 892**

## ***Le Christ de Gala (The Christ of Gala)***

<b>Date:</b>	c. 1978
<b>Technique:</b>	Oil on canvas
<b>Dimensions:</b>	100 x 100 cm Left element 100 x 100 cm Right element
<b>Signature:</b>	Unsigned and undated
<b>Location:</b>	Pérez Simón Collection, Mexico



## Exhibitions

- 1979, Paris, Centre Georges Pompidou, Musée National d'Art Moderne, *Salvador Dalí: rétrospective, 1920-1980*, 18/12/1979 - 21/04/1980, cat. no. 331
- 1980, London, The Tate Gallery, *Salvador Dalí*, 14/05/1980 - 29/06/1980, cat. no. 247
- 1983, Madrid, Museo Español de Arte Contemporáneo, *400 obras de Salvador Dalí del 1914 al 1983*, 15/04/1983 - 29/05/1983, cat. no. 434
- 1989, Stuttgart, Staatsgalerie, *Salvador Dalí, 1904-1989*, 13/05/1989 - 23/07/1989, cat. no. 312
- 2000, Hartford, Connecticut, Wadsworth Atheneum Museum of Art, *Dalí's optical illusions*, 21/01/2000 - 26/03/2000, cat. no. 65
- 2004, Venezia, Palazzo Grassi, *Dalí*, 12/09/2004 - 16/01/2005, cat. no. 248
- 2010, Paris, Musée Jacquemart-André, *Du Greco à Dalí : les grands maîtres espagnols de la collection Pérez Simón*, 12/03/2010 - 01/08/2010, cat. no. 66
- 2012, Paris, Centre Pompidou, *Dalí*, 21/11/2012 - 25/03/2013, p. 272

## Bibliography

- *Salvador Dalí: rétrospective, 1920-1980*, Centre Georges Pompidou, Musée National d'Art moderne, Paris, 1979, p. 394 (a i b)
- *Salvador Dalí*, The Tate Gallery, London, 1980, il. 247
- Josep Pla, *Salvador Dalí (il.)*, *Obras de museu*, DASA, Figueres, 1981, p. 162 (reversed image)
- *400 obras de Salvador Dalí de 1914 a 1983*, Obra Cultural de la Caixa de Pensions, [Madrid], 1983, p. 242
- *Distribucions d'art surrealista*, Distribucions d'Art Surrealista, Barcelona, 1983, p. 27 (detail)
- Josep Vallès i Rovira, *Dalí delit Empordà*, Carles Vallès, Figueres, 1987, p. 169, p. 170 (indirect image)
- *Salvador Dalí, 1904-1989*, Gerd Hatje, Stuttgart, 1989, p. 404
- *Los Dalís de Dalí: colección del museo nacional centro de arte reina Sofía*, Centro cultural, Arte contemporaneo, México D. F., 1990, p. 51
- A. B. Tello, *Salvador Dalí*, Vilmar, Barcelona, 1990, p. 123 (reversed image)
- Luis Romero, *PsicoDálico Dalí*, Mediterranea, Barcelona, 1991, p. 241
- Robert Descharnes, Gilles Néret, *Salvador Dalí, 1904 -1989*, Benedikt Taschen, Köln, 1994, p. 666-667
- Ralf Schiebler, *Dalí : genius, obsession and lust*, Prestel, Munich - New York, 1996, p. 108
- *Salvador Dalí's optical illusions*, Wadsworth Atheneum Museum of Art, Hartford, 1999, n. p., n. p.
- *Dalí's optical illusions*, Wadsworth Atheneum Museum of Art, Hartford, Connecticut, 2000, p. 183
- *Les Essentiels de l'art Dalí*, Ludion, Amsterdam, 2003, p. 380
- *The Portable Dalí*, Universe, New York, 2003, p. 380-381
- Alyse Gaultier, *L'Abcdaire de Dalí*, Flammarion, Paris, 2004, p. 23
- *Dalí*, Rizzoli, New York, 2005, p. 417
- *Du Greco à Dalí : les grands maîtres espagnols de la collection Pérez Simón*, Snoeck, Heule (Belgique), 2010, p. 194, p. 195 (detail)
- Ralf Schiebler, *Dalí : the reality of dreams*, Prestel, Munich, London, New York, 2011, p. 108, p. 109
- *Dalí*, Centre Pompidou, Paris, 2012, p. 272



## **Reproduction Rights**

The copyright on Salvador Dalí's works, included those that are reproduced in this Web page, is held by the Spanish State and has been granted in exclusivity to the Fundació Gala-Salvador Dalí.

Pursuant to intellectual property laws in force, the total or partial reproduction, distribution, transformation, public communication, interactively making available to the public, as well as any other exploitation, by any means, of the works included in this Web page is prohibited.

Any exploitation of Salvador Dalí's works is subject to the prior application and clearance of the relevant licence issued by VEGAP (tel. 91 532 66 32 and 93 201 03 31 ; [www.vegap.es](http://www.vegap.es)). Copyright infringement will be prosecuted according to Laws.