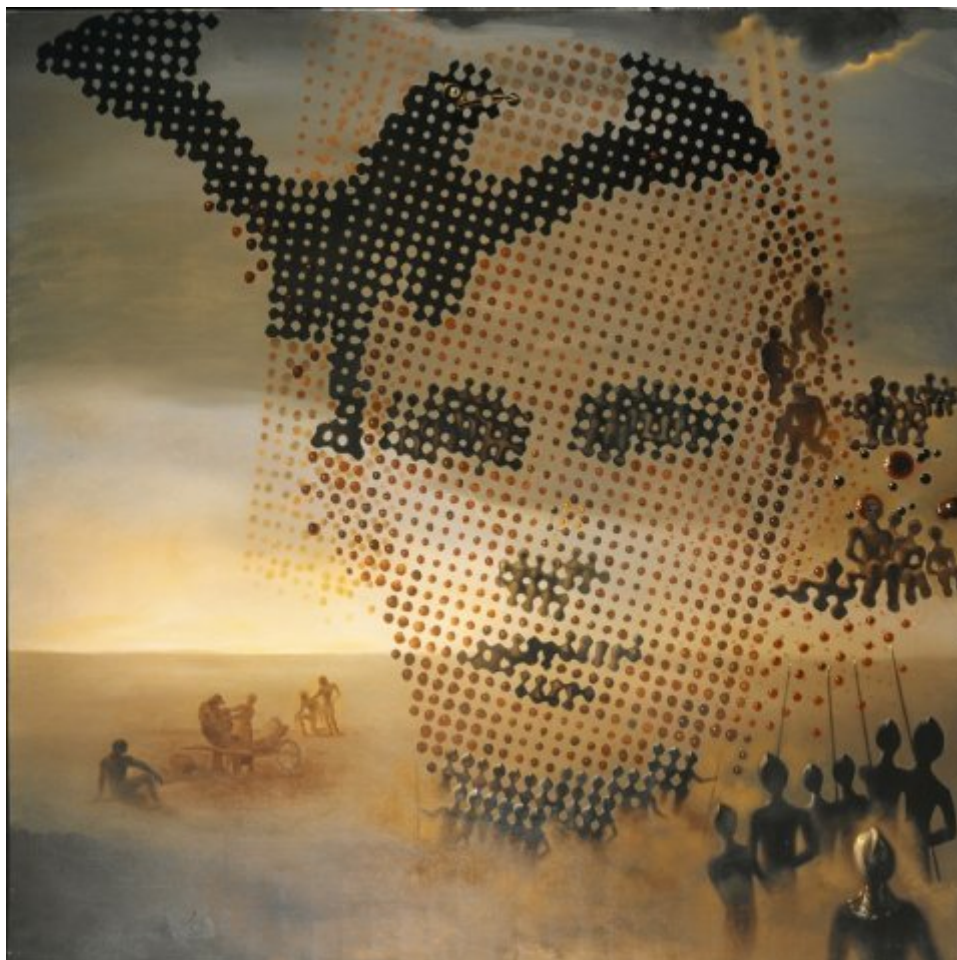




FUNDACIÓ
GALA-SALVADOR DALÍ



© Salvador Dalí, Fundació Gala-Salvador Dalí, Figueres, 2014

Cat. no. P 802

Portrait of my dead brother

Date:	c. 1963
Technique:	Oil on canvas
Dimensions:	175.3 x 175.3 cm
Signature:	Signed lower left: <i>Dalí</i>
Location:	The Dalí Museum, St. Petersburg (Florida)



Provenance

- Gala Dalí
- Auctioned at Christie's, New York, November 7th, 1995

Exhibitions

- 1963, New York, M. Knoedler @ Co., Inc., *Dalí : "hommage à Crick et Watson"*, 26/11/1963 - 26/12/1963, cat. no. 3
- 1964, Tokyo, Tokyo Prince Hotel Gallery, *Salvador Dalí : exhibition - Japan 1964*, 08/09/1964 - 18/10/1964, cat. no. 66
- 1965, New York, Gallery of Modern Art, *Salvador Dalí, 1910-1965*, 18/12/1965 - 13/03/1966, cat. no. 167
- 1969, San Diego, Fine Arts Gallery of San Diego & Putnam Foundation, Timken Gallery Balboa Park, *Modern masters of Spain painting : legacy of Spain, XXth century*, 02/01/1969 - 04/03/1969, no reference
- 1973, Humlebaek, Louisiana Museum of Modern Art, *Salvador Dali*, 06/10/1973 - 02/12/1973, cat. no. 32
- 1974, Frankfurt am Main, Städtische Galerie und Städelsche Kunstinstitut, *Salvador Dalí*, 14/03/1974 - 05/05/1974, cat. no. 18
- 1989, Humlebaek, Louisiana Museum of Modern Art, *Salvador Dali*, 16/12/1989 - 11/03/1990, cat. no. 62
- 1989, Stuttgart, Staatsgalerie, *Salvador Dalí, 1904-1989*, 13/05/1989 - 23/07/1989, cat. no. 272
- 1990, Montréal, Musée des Beaux-Arts, *Salvador Dalí*, 27/04/1990 - 29/07/1990, cat. no. 95
- 1998, Liverpool, Tate Gallery Liverpool, *Salvador Dalí: a mythology*, 21/10/1998 - 31/01/1999, cat. no. 52
- 2000, Hartford, Connecticut, Wadsworth Atheneum Museum of Art, *Dalí's optical illusions*, 21/01/2000 - 26/03/2000, núm. cat 57
- 2004, Venezia, Palazzo Grassi, *Dalí*, 12/09/2004 - 16/01/2005, cat. no. 240
- 2010, Atlanta, High Museum of Art, *Salvador Dalí: The late work*, 07/07/2010 - 09/02/2011, cat. no. 35
- 2012, Paris, Centre Pompidou, *Dalí*, 21/11/2012 - 25/03/2013, p. 297
- 2013, Madrid, Museo Nacional Centro de Arte Reina Sofía, *Dalí. Todas las sugerencias poéticas y todas las posibilidades plásticas*, 27/04/2013 - 02/09/2013, p. 297

Bibliography

- *Salvador Dalí : exhibition - Japan 1964*, Mainichi Newspaper, Tokyo, 1964, p. 118
- *Salvador Dalí, 1910-1965*, The Foundation for Modern Art, New York, 1965, p. 138
- Anita Wallerstain, "Salvador Dali Exhibition", *Register*, 05/02/1966, New Haven, Conn., n. p. (indirect image)
- "[Salvador Dali, portrait...]" (il.), *Arts*, 31/03/1966, New York, N.y., n. p. (detail)
- Max Gérard, *Dalí de Draeger*, Blume, Barcelona, 1968, il. 132
- *Modern masters of Spain painting : legacy of Spain, XXth century*, Fine Arts Gallery of San Diego & Putnam Foundation, Timken Gallery Balboa Park, San Diego, 1969, n. p.
- A. Reynolds Morse, *Dalí, the masterworks*, The Reynolds Morse Foundation, Cleveland, 1971, p. 38, p. 39 (indirect image)
- Antonio Fernández Molina, *Dalí*, Dirección General de Bellas Artes, Madrid, 1971, cover (detail)
- Luis Romero, *Todo Dalí en un rostro*, Blume, Barcelona, Madrid, 1975, p. 322
- Ramón Gómez de la Serna, *Dalí*, Espasa-Calpe, Madrid, 1977, p. 158-159 (detail), p. 251
- Robert Descharnes, S. Terayama, *Dalí: the book of great masters*, Zauho, Tokyo, 1978, il. 53
- Calvin Tomkins, *Duchamp et son temps : 1887-1968*, Time-Life International, Nederland, 1978, p. 125 (indirect image)
- *Petit journal Salvador Dalí*, Centre Georges Pompidou, [París], 1979, p. 8 (detail)
- *Salvador Dalí: rétrospective, 1920-1980*, Centre Georges Pompidou, Musée National d'Art moderne, Paris, 1979, p. 273
- Cesáreo Rodríguez-Aguilera, *Salvador Dalí*, Nauta, Barcelona, 1980, il. 29



- *Homage to Dalí*, Chartwell Books, Secaucus, New Jersey, [1980], p.105
- *DALI*, The Tate Gallery, [London], 1980, il. 26 (detail)
- *Salvador Dalí*, The Tate Gallery, London, 1980, il. 218
- D. C., "Apoteosis daliniana en Paris", *Blanco y Negro*, 02/01/1980, Madrid, p. 43
- Concha Alzola, "La retrospectivas de Dalí", *Vanidades Continental*, 01/04/1980, Panama City, FI, n. p.
- Dawn Ades, *Dalí and surrealism*, Harper & Row, New York, 1982, p. 185
- *Rétrospective Salvador Dalí 1982*, Edition Art Life, [S.I.], 1982, p. 33, Il. 4
- *Dalí*, Sarpe, Madrid, 1984, il. 49, p. 93
- Luis Romero, Josep Postius (il.), *Aquel Dalí*, Argos Vergara, Barcelona, 1984, p. 86 (indirect image)
- *Salvador Dalí, 1904-1989*, Gerd Hatje, Stuttgart, 1989, p. 361
- *Louisiana revy*, [Louisiana Revy], Humlebaek, 1989, cover (detail)
- *Salvador Dalí, 1904 - 1989*, Kunsthaus Zürich, Zürich, 1989, n. p.
- *Salvador Dalí*, Musée des Beaux-Arts, Montréal, 1990, p. 161
- *Los Dalís de Dalí: colección del museo nacional centro de arte reina Sofía*, Centro cultural, Arte contemporaneo, México D. F., 1990, p. 42
- *Dalí exhibition*, Mitsukoshi Museum of Art, Tokyo, 1991, p. 10, p. 26
- Jaime Brihuega, *Miró y Dalí: los grandes surrealistas*, Anaya, Madrid, 1993, p. 81
- Robert Descharnes, Gilles Néret, *Salvador Dalí, 1904 -1989*, Benedikt Taschen, Köln, 1994, p. 552
- Marco Di Capua, *Dalí*, Librairie Gründ, Paris, 1994, p. 246
- Robert Radford, *Dalí*, Phaidon, London, 1997, p. 281
- Dawn Ades, Fiona Bradley, *Salvador Dalí: a mythology*, Tate Gallery Publishing, London, 1998, p. 19 (sencera i detall)
- Dawn Ades, *Dalí*, Thames and Hudson, London, 1998, p. 185 (Il. 150)
- Robert S. Lubar, *The Salvador Dalí Museum collection*, Bulfinch, Boston - New York - London, 2000, p. 156
- *Hypermental : rampant reality 1950-2000, from Salvador Dalí to Jeff Koons*, Hatje Cantz, Ostfildern-Ruit, Germany, 2000, p. 50-51
- *Dalí's optical illusions*, Wadsworth Atheneum Museum of Art, Hartford, Connecticut, 2000, p. 8 (detail) , p. 175
- *Dalí's Optical Illusions*, Smithsonian Institution, Washington DC, 2000, n. p.
- *Grandes maestros de la pintura : Dalí*, Altaya, Barcelona, 2001, p. 3
- *The Endless enigma : Dalí and the magicians of multiple meaning*, Hatje Cantz, Ostfildern-Ruit, 2003, p. 51
- *Les Essentiels de l'art Dalí*, Ludion, Amsterdam, 2003, p. 338
- Ricard Mas Peinado, *Universdalí*, Lunwerg, Barcelona, Madrid, 2003, p. 17, p. 31 (detail)
- *The Portable Dalí*, Universe, New York, 2003, p. 338
- Alyse Gaultier, *L'Abcdaire de Dalí*, Flammarion, Paris, 2004, p. 53
- *Dalí, un creador dissident*, Destino, Barcelona, 2004, p. 324
- *Obra completa : Álbum*, Destino, Fundació Gala-Salvador Dalí, Sociedad Estatal de Conmemoraciones Culturales, Barcelona, [Figueres], [Madrid], 2004, p. 272
- *El País de Dalí*, Consorci del Museu de l'Empordà, Figueres, 2004, p. 310 (indirect image)
- *Persistence and memory : new critical perspectives on Dalí centennial*, Bompiani, [Milà], 2004, p. 147 (detail), p. 204 (detail)
- Marina García, *Dalí per a nens*, Albur, Barcelona, 2004, p. 8, p. 9 (detail), p. 14
- *Pollock to Pop : America's brush with Dalí*, Salvador Dalí Museum, St. Petersburg, 2005, p. 53
- *Dalí*, Rizzoli, New York, 2005, p. 403
- "The Grand Master of Surrealism Salvador Dali", *Usa today magazine*, 31/05/2005, McLean, VA, p. 38
- *Salvador Dalí. La Gare de Perpignan: Pop , Op, Yes-Yes, Pompier*, Museum Ludwig, Köln, 2006, p. 15 (detail)
- *Dali's universe and masterpieces of surrealists*, The Museum of Art, Ehime (Japó), [2006], p. 10
- *Salvador Dalí: an illustrated life*, Tate Publishing, Fundació Gala-Salvador Dalí, Sociedad Estatal de Conmemoraciones Culturales - Ministerio de Cultura, London, [Figueres], [Madrid], 2007, p. 272
- *Lo[s] Cinético[s]*, Museo Nacional Centro de Arte Reina Sofía, Bancaja, Madrid, [Madrid], 2007, p. 24
- *The Dalí renaissance : new perspectives on his life and art after 1940*, Philadelphia Museum of Art,



Philadelphia, 2008, p. 19

- *Salvador Dalí : the late work*, High Museum of Art, Yale University Press, Atlanta, New Haven and London, 2010, p. 91
- *Le Surréalisme c'est moi!*, Kunsthalle, Wien, 2011, p. 155
- *Dalí*, Centre Pompidou, Paris, 2012, p. 297
- David Lomas, *Simulating the marvellous : psychology - surrealism - postmodernism*, Manchester University Press, Manchester, New York, 2013, p. 312

Reproduction Rights

The copyright on Salvador Dalí's works, included those that are reproduced in this Web page, is held by the Spanish State and has been granted in exclusivity to the Fundació Gala-Salvador Dalí.

Pursuant to intellectual property laws in force, the total or partial reproduction, distribution, transformation, public communication, interactively making available to the public, as well as any other exploitation, by any means, of the works included in this Web page is prohibited.

Any exploitation of Salvador Dalí's works is subject to the prior application and clearance of the relevant licence issued by VEGAP (tel. 91 532 66 32 and 93 201 03 31 ; www.vegap.es). Copyright infringement will be prosecuted according to Laws.