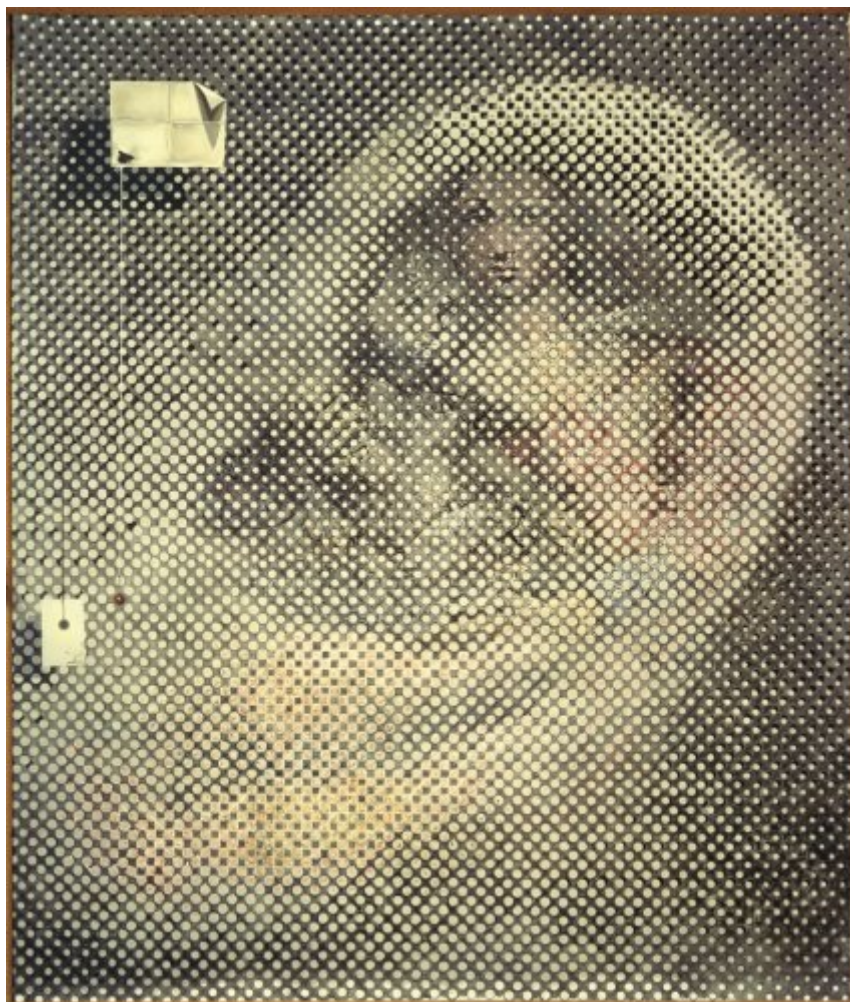




FUNDACIÓ  
GALA-SALVADOR DALÍ



© Salvador Dalí, Fundació Gala-Salvador Dalí, Figueres, 2014 Photo © 1987  
The Metropolitan Museum of Art

**Cat. no. P 734**

***Quasi-grey picture which, closely seen, is an abstract one; seen from two metres is the Sistine Madonna of Raphael; and from fifteen metres is the ear of an angel measuring one metre and a half; which is painted with anti-matter; therefore with pure energy***

**Antimatter Ear**

Madonna



**Date:** 1958

**Technique:** Oil on canvas

**Dimensions:** 225.7 x 191.1 cm

**Signature:** Signed and dated center left: *Dalí / 1958*

**Location:** The Metropolitan Museum of Art, New York. Gift of Drue Heinz, in memory of Mr. Henry J. Heinz, 1987



## Provenance

- Carstairs Gallery, New York
- Mr. and Mrs. Henry J. Heinz II, New York

## Exhibitions

- 1958, New York, Carstairs Gallery, *Salvador Dali*, December 1958 - January 1959, cat. no. 1
- 1960, New York, D'Arcy Galleries, *Internation Surrealist Exhibition: Surrealist Intrusion in the Enchanters Domain*, 29/11/1960 - 14/01/1961, cat. no. 32
- 1963, Fredericton, The Beaverbook Art Gallery, *The Dunn International an exhibition of contemporary art*, 07/09/1963 - 06/10/1963, cat. no. 19
- 1964, Tokyo, Tokyo Prince Hotel Gallery, *Salvador Dalí : exhibition - Japan 1964*, 08/09/1964 - 18/10/1964, cat. no. 56
- 1965, New York, Gallery of Modern Art, *Salvador Dalí, 1910-1965*, 18/12/1965 - 13/03/1966, addendum p. 4
- 1970, Rotterdam, Museum Boymans-van Beuningen, *Dalí*, 21/11/1970 - 10/01/1971, cat. no. 86
- 1971, Baden-Baden, Staatliche Kunsthalle, *Dalí: Gemälde, Zeichnungen, Objekte, Schmuck*, 29/01/1971 - 28/03/1971, cat. no. 71
- 1980, London, The Tate Gallery, *Salvador Dalí*, 14/05/1980 - 29/06/1980, cat. no. 217
- 1982, Tokyo, Isetan Museum of Art, *Rétrospective Salvador Dalí 1982*, 28/02/1982 - 06/04/1982, cat. no. 21
- 1985, Charleroi, Palais des Beaux Arts, *Picasso, Miró, Dalí : évocations d'Espagne*, 26/09/1985 - 22/12/1985, cat. no. 40
- 1989, Stuttgart, Staatsgalerie, *Salvador Dalí, 1904-1989*, 13/05/1989 - 23/07/1989, cat. no. 264
- 2004, Venezia, Palazzo Grassi, *Dalí*, 12/09/2004 - 16/01/2005, cat. no. 233
- 2007, Madrid, Museo Nacional Centro de Arte Reina Sofía, *Lo[s] Cinético[s]*, 27/03/2007 - 20/08/2007, p. 83
- 2010, Atlanta, High Museum of Art, *Salvador Dalí: The late work*, 07/07/2010 - 09/02/2011, cat. no. 27

## Bibliography

- "The Dali News", *Time*, 05/01/1959, New York, n. p.
- Miguel Utrillo, "Dalí en zig-zag", *Blanco y Negro*, 10/01/1959, Madrid, n. p. (detail)
- [Salvador Dalí «The Ear of an Angel» French Masters of the XIX and XX Century. Carstairs Gallery] [anunci], *The Burlington Magazine*, 31/12/1960, London, p. XVIII
- *The Dunn International : an exhibition of contemporary art*, The Beaverbook art Gallery, Tate Gallery, Fredericton, Londres, 1963, n. p.
- *Dunn international : an exhibition of contemporary painting sponsored by the Sir James Dunn Foundation*, Arts Council, [S.I.], 1963, il. 19 (detail)
- *Salvador Dalí : exhibition - Japan 1964*, Mainichi Newspaper, Tokyo, 1964, p. 110
- Paul H. Walton, *Dali / Miró*, Tudor Publishing Company, New York, 1967, il. 44
- Max Gérard, *Dalí de Draeger*, Blume, Barcelona, 1968, il. 129 (detail)
- *Dalí*, Museum Boymans-van Beuningen, Rotterdam, 1970, il. 86
- *Dalí: Gemälde, Zeichnungen, Objekte, Schmuck*, Staatliche Kunsthalle, Baden-Baden, 1971, p. 182
- A. Reynolds Morse, *Dalí, the masterworks*, The Reynolds Morse Foundation, Cleveland, 1971, p. 23
- *Ninety-three oils by Salvador Dalí : 1917-1970*, The Salvador Dali Museum, Cleveland, 1973, p. 182
- *Salvador Dalí ... a panorama of his art*, The Salvador Dali Museum, Cleveland, 1974, p. 182, p. II (indirect image)
- Luis Romero, *Todo Dalí en un rostro*, Blume, Barcelona, Madrid, 1975, p. 153 (detail)
- *Salvador Dalí: rétrospective, 1920-1980*, Centre Georges Pompidou, Musée National d'Art moderne, Paris, 1979, p. 388
- *Petit journal Salvador Dalí*, Centre Georges Pompidou, [Paris], 1979, p. 12



- *Rétrospective Salvador Dalí 1982*, Edition Art Life, [S.l.], 1982, cat. no. 21
- Dawn Ades, *Dalí and surrealism*, Harper & Row, New York, 1982, p. 184
- Ignacio Gómez de Liaño, *Dalí*, Polígrafa, Barcelona, 1983, il. 114 (detail)
- Maria Gabriella Guglielmi, *Fotografia e paranoia. L'occhio di Salvador Dalí*, Arnica, Roma, 1983, p. 65
- Picasso, Miró, Dalí : *évoqueries d'Espagne*, Palais des Beaux-Arts. Europalia 85 España, Charleroi, 1985, p. 247
- *Effetto Arcimboldo*, Bompiani, Milano, 1987, p. 357
- [Salvador Dalí. Spanish, born 1904. Madonna], *Recent Acquisitions (metropolitan Museum Of Art)*, 31/12/1987, New York, p. 62
- *Salvador Dalí, 1904-1989*, Gerd Hatje, Stuttgart, 1989, p. 349
- *Los Dalís de Dalí: colección del museo nacional centro de arte reina Sofía*, Centro cultural, Arte contemporáneo, México D. F., 1990, p. 42
- Paul Moorhouse, *Dalí*, Magna Books, Wigston [Anglaterra], 1990, p. 105
- *Marcel Duchamp*, Thames & Hudson, London, 1993, [27-28 de Novembre]
- André Bouguenec, *Salvador Dalí : philosophe et esotériste incompris*, Opéra, Nantes, 1994, P. XV
- Robert Descharnes, Gilles Néret, *Salvador Dalí, 1904 -1989*, Benedikt Taschen, Köln, 1994, p. 502 (detail), p. 503
- Grace Megwinoff Andréu, *Dalí: Salvador de la pintura*, Grace Megwinoff Andréu, San Juan (Puerto Rico), 1998, p. 36
- Dawn Ades, *Dalí*, Thames and Hudson, London, 1998, p. 184 (Il. 149)
- *Hypermental : rampant reality 1950-2000, from Salvador Dalí to Jeff Koons*, Hatje Cantz, Ostfildern-Ruit, Germany, 2000, p. 11
- *Os dalís de Dalí*, Fundación Caixa Galicia, [A Coruña], 2003, p. 126 (indirect image)
- *Dalí : afinitats electives*, Generalitat de Catalunya. Departament de Cultura, Barcelona, 2004, p. 96
- Alyse Gaultier, *L'Abcdaire de Dalí*, Flammarion, Paris, 2004, p. 86
- *Persistence and memory : new critical perspectives on Dalí centennial*, Bompiani, [Milà], 2004, p. 145 (detail)
- Catherine Millet, *Dalí et moi*, Gallimard, [París], 2005, p. 88, p. 89 (detail)
- *Pollock to Pop : America's brush with Dalí*, Salvador Dalí Museum, St. Petersburg, 2005, p. 52
- *Dalí*, Rizzoli, New York, 2005, p. 387
- *In the company of Dalí : the photographs of Robert Whitaker*, Touchstone Books, Sutton Valence, 2006, p. 88 (indirect image) (detail)
- *Lo[s] Cinético[s]*, Museo Nacional Centro de Arte Reina Sofía, Bancaja, Madrid, [Madrid], 2007, p. 93
- *The Dalí renaissance : new perspectives on his life and art after 1940*, Philadelphia Museum of Art, Philadelphia, 2008, p. 2 (indirect image), p. 17 (detail)
- *Salvador Dalí : the late work*, High Museum of Art, Yale University Press, Atlanta, New Haven and London, 2010, p. 83
- Catherine Grenier, *Salvador Dalí : l'invention de soi*, Flammarion, París, 2011, p. 218
- Gabriel Montua, *Dalís 20. Jahrhundert : die westliche Kunst zwischen Politik, Markt und Medien*, De Gruyter, Boston, Berlin, 2015, p. 394
- *Dalí: Il sogno del Classico*, Skira, Milano, 2016, p. 35
- Torsten Otte, *Salvador Dalí & Andy Warhol : encounters in New York and beyond*, Scheidegger & Spiess, Zürich, 2016, p. [383]
- *Dalí atómico*, Fundación Bancaria "la Caixa", [Barcelona], 2018, p. 156



## **Reproduction Rights**

The copyright on Salvador Dalí's works, included those that are reproduced in this Web page, is held by the Spanish State and has been granted in exclusivity to the Fundació Gala-Salvador Dalí.

Pursuant to intellectual property laws in force, the total or partial reproduction, distribution, transformation, public communication, interactively making available to the public, as well as any other exploitation, by any means, of the works included in this Web page is prohibited.

Any exploitation of Salvador Dalí's works is subject to the prior application and clearance of the relevant licence issued by VEGAP (tel. 91 532 66 32 and 93 201 03 31 ; [www.vegap.es](http://www.vegap.es)). Copyright infringement will be prosecuted according to Laws.