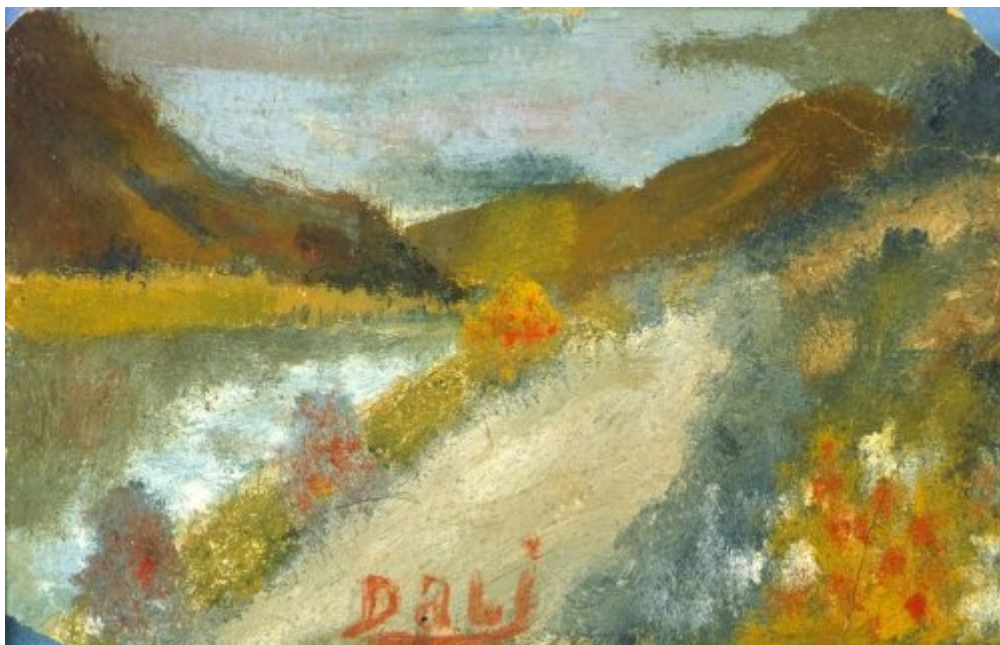




FUNDACIÓ  
GALA-SALVADOR DALÍ



© Salvador Dalí, Fundació Gala-Salvador Dalí, Figueres, 2004

## Cat. no. P 6

### Landscape with River

<b>Date:</b>	1910-1914
<b>Technique:</b>	Oil on cardboard
<b>Dimensions:</b>	9 x 14 cm The cardboard is a postcard
<b>Signature:</b>	Signed lower center: <i>DaLi</i>
<b>Location:</b>	Private collection



## Provenance

- Anna Maria Dalí, Cadaques
- Joan Abelló Prat

## Exhibitions

- 1983, Madrid, Museo Español de Arte Contemporáneo, *400 obras de Salvador Dalí del 1914 al 1983*, 15/04/1983 - 29/05/1983, cat. no. 5
- 1989, Stuttgart, Staatsgalerie, *Salvador Dalí, 1904-1989*, 13/05/1989 - 23/07/1989, cat. no. 4
- 2004, Cadaqués, Societat l'Amistat, *Atmosfera Dalí*, 02/07/2004 - 03/10/2004, il. 02
- 2006, Zaragoza, Centro de Exposiciones y Congresos de Zaragoza, *Dalí*, 23/02/2006 - 16/04/2006, p. 35

## Bibliography

- *400 obras de Salvador Dalí de 1914 a 1983*, Obra Cultural de la Caixa de Pensions, [Madrid], 1983, p. 17
- Manuel Ibañez Escofet, "El Cadaqués de Dalí", *La Vanguardia*, 05/06/1983, Barcelona, n. p. (detail)
- Josep Vallès i Rovira, *Dalí delit Empordà*, Carles Vallès, Figueres, 1987, p. 57
- *Salvador Dalí, 1904-1989*, Gerd Hatje, Stuttgart, 1989, p. 11
- Robert Descharnes, Gilles Néret, *Salvador Dalí, 1904 -1989*, Benedikt Taschen, Köln, 1994, p. 14
- *Atmosfera Dalí*, Ajuntament de Cadaqués, Societat l'Amistat, Cadaqués, 2004, p. 13
- *Dalí*, Ibercaja, Zaragoza, 2006, p. 35
- Montse Aguer i Teixidor, *Los tesoros de Salvador Dalí*, Librería Universitaria, Barcelona, 2009, p. 10
- *Del primer Dalí al Manifest Groc : 1914-1928*, Ajuntament de Cadaqués, Museu de Cadaqués, Cadaqués, 2011, p. 79

## Reproduction Rights

The copyright on Salvador Dalí's works, included those that are reproduced in this Web page, is held by the Spanish State and has been granted in exclusivity to the Fundació Gala-Salvador Dalí.

Pursuant to intellectual property laws in force, the total or partial reproduction, distribution, transformation, public communication, interactively making available to the public, as well as any other exploitation, by any means, of the works included in this Web page is prohibited.

Any exploitation of Salvador Dalí's works is subject to the prior application and clearance of the relevant licence issued by VEGAP (tel. 91 532 66 32 and 93 201 03 31 ; [www.vegap.es](http://www.vegap.es)). Copyright infringement will be prosecuted according to Laws.