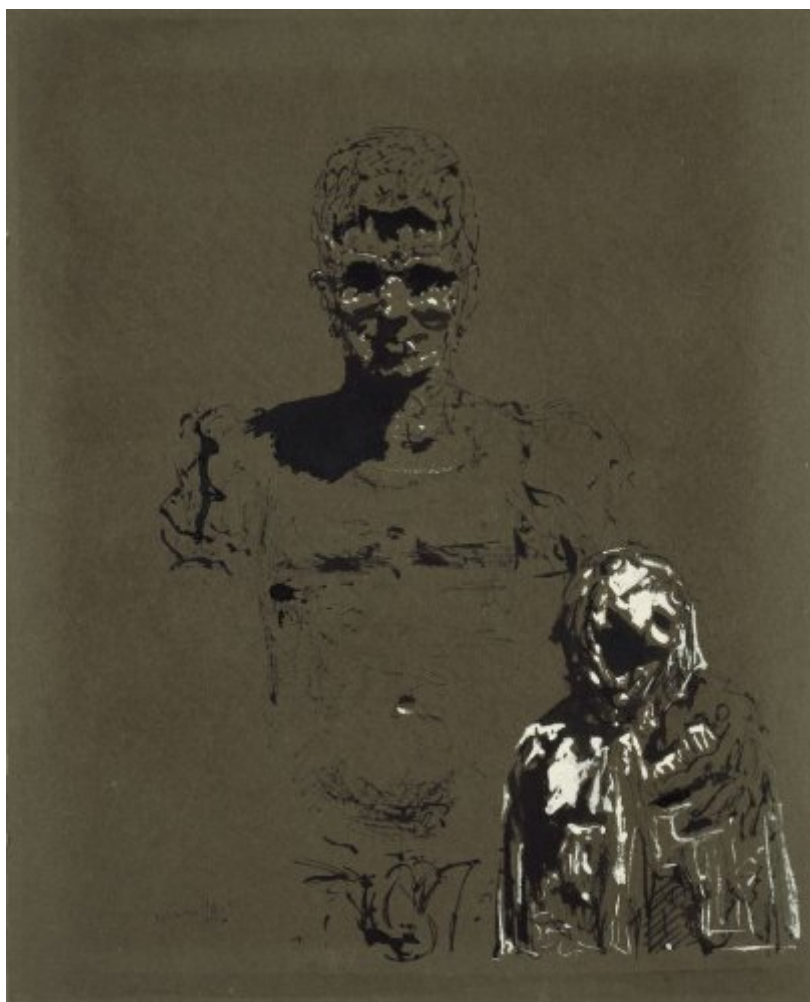




FUNDACIÓ  
GALA-SALVADOR DALÍ



© Salvador Dalí, Fundació Gala-Salvador Dalí, Figueres, 2007

## Cat. no. P 513

### Portrait of René Crevel

The Man with a Cigarette

**Date:** 1934

**Technique:** Indian ink and gouache on cardboard

**Dimensions:** 50.5 x 40.5 cm



**Signature:** Signed and dated lower left: *Salvador Dalí / 1934*

**Location:** Fundació Gala-Salvador Dalí, Figueres



## Provenance

- Galerie de l'Elysée (Alex Maguy), Paris
- Georges Troisfontaines, Paris
- Auctioned at Sotheby's, London, December 1st, 1993

## Exhibitions

- 1964, Tokyo, Tokyo Prince Hotel Gallery, *Salvador Dalí : exhibition - Japan 1964*, 08/09/1964 - 18/10/1964, cat. no. 78
- 1968, Charleroi, Palais des Beaux-Arts, *Salvador Dalí : peintures, aquarelles, dessins, estampes, etc.*, 01/03/1968 - 31/03/1968, cat. no. 22
- 1970, Rotterdam, Museum Boymans-van Beuningen, *Dalí*, 21/11/1970 - 10/01/1971, cat. no. 99
- 1979, Paris, Centre Georges Pompidou, Musée National d'Art Moderne, *Salvador Dalí: rétrospective, 1920-1980*, 18/12/1979 - 21/04/1980, cat. no. 80
- 1995, Milano, Palazzo Forti, Verona, *Dalí, Miró, Picasso e il surrealismo spagnolo*, 29/07/1995 - 22/10/1995, p. 94
- 1996, Madrid, Fundación Cultural Mapfre Vida, *Postrimerías : alegorías de la muerte en el arte español contemporáneo*, 07/05/1996 - 30/06/1996, p. 77
- 1998, Figueres, Teatre-Museu Dalí, *Salvador Dalí. Àlbum de família*, 01/12/1998 - 06/01/1999, cat. no. 27
- 2006, Köln, Museum Ludwig, *Salvador Dalí : La gare de Perpignan - Pop, Op, Yes-yes, Pompier*, 18/03/2006 - 25/06/2006, cat. no. 42

## Bibliography

- *Salvador Dalí : exhibition - Japan 1964*, Mainichi Newspaper, Tokyo, 1964, p. 50
- Salvador Dalí, *Diary of a genius*, Doubleday, New York, 1965, il. 10 (detail)
- Mary Lou Temple, "Dali Writes About Himself", *Times*, 12/12/1965, Shreveport, La., n. p. (detail)
- *Salvador Dalí : peintures, aquarelles, dessins, estampes, etc.*, Palais des Beaux-Arts, Charleroi, 1968, il. 22
- *Dalí*, Museum Boymans-van Beuningen, Rotterdam, 1970, il. 99
- Patrick Waldberg, Ingrid Krause, *Der Surrealismus, 1922-1942*, Haus der Kunst, Musée des Arts Décoratifs, Munich, Paris, 1972, cat. 96
- Robert Descharnes, *Salvador Dalí*, Nouvelles Editions Françaises, Paris, 1973, p. 52
- *Salvador Dalí: rétrospective, 1920-1980*, Centre Georges Pompidou, Musée National d'Art moderne, Paris, 1979, p. 156
- Gaëtan Picon, *Diario del surrealismo*, Skira, Destino, Genève, [Barcelona], 1981, p. 219
- *Noves sales : Teatre-Museu Dalí*, Fundació Gala-Salvador Dalí, Electa, [Figueres], Madrid, 1994, p. 28
- Robert Descharnes, Gilles Néret, *Salvador Dalí, 1904 -1989*, Benedikt Taschen, Köln, 1994, p. 219
- *Dalí, Miró, Picasso e il surrealismo spagnolo*, Skira, Milano, 1995, p. 94
- *Postrimerías : alegorías de la muerte en el arte español contemporáneo*, Fundación Cultural Mapfre Vida, Madrid, 1996, p. 77
- Montse Aguer i Teixidor, Fèlix Fanés, *Salvador Dalí. Àlbum de família*, Fundació Gala-Salvador Dalí, Fundació "La Caixa", [Figueres], [Barcelona], 1998, p. 76
- *Salvador Dalí : La gare de Perpignan - Pop, Op, Yes-yes, Pompier*, Hatje Cantz, Ostfildern, 2006, p. 197
- *Adquisicions de la Fundació Gala-Salvador Dalí de 1991 a 2006 = Adquisiciones de la Fundación Gala-Salvador Dalí de 1991 a 2006 = Acquisition of the Gala-Salvador Dalí Foundation from 1991 to 2006*, Fundació Gala-Salvador Dalí, Figueres, 2006, cover (detail), il. 16



## **Reproduction Rights**

The copyright on Salvador Dalí's works, included those that are reproduced in this Web page, is held by the Spanish State and has been granted in exclusivity to the Fundació Gala-Salvador Dalí.

Pursuant to intellectual property laws in force, the total or partial reproduction, distribution, transformation, public communication, interactively making available to the public, as well as any other exploitation, by any means, of the works included in this Web page is prohibited.

Any exploitation of Salvador Dalí's works is subject to the prior application and clearance of the relevant licence issued by VEGAP (tel. 91 532 66 32 and 93 201 03 31 ; [www.vegap.es](http://www.vegap.es)). Copyright infringement will be prosecuted according to Laws.