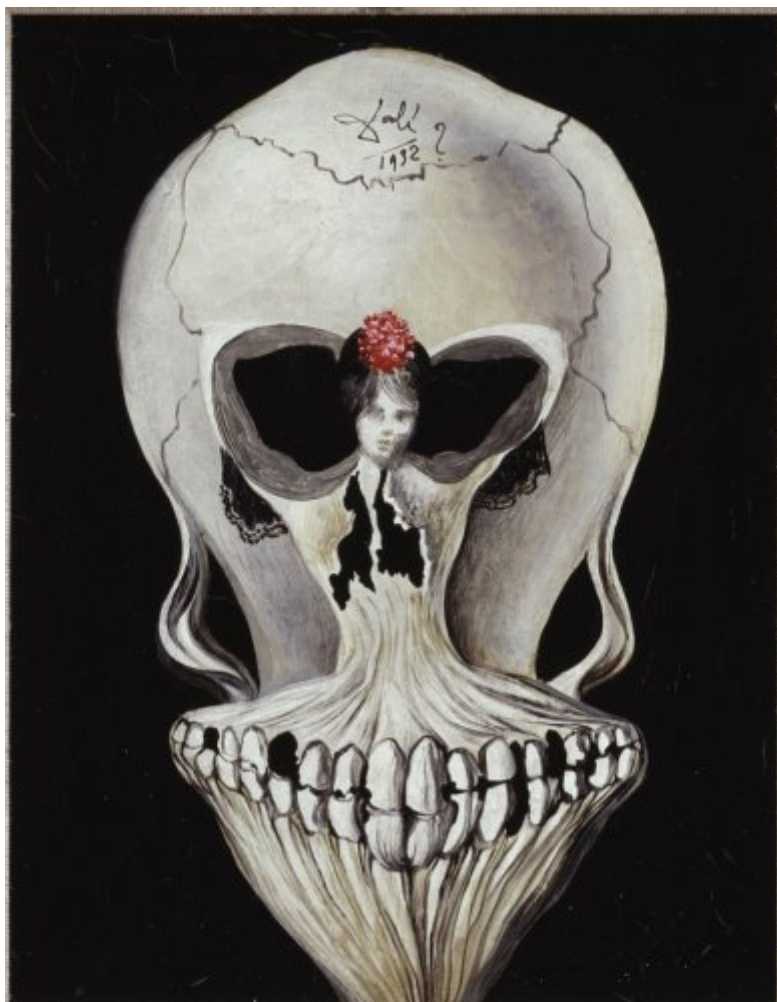




FUNDACIÓ  
GALA-SALVADOR DALÍ



© Salvador Dalí, Fundació Gala-Salvador Dalí, Figueres, 2011

## Cat. no. P 500

### Dancer - Skull

- Date:** c. 1939
- Technique:** Oil on canvas
- Dimensions:** 24.5 x 19.5 cm
- Signature:** Signed and dated upper center: *Dalí / 1932 ?*



**Location:** Private collection



## Provenance

- Georges Hugnet, Paris
- Kunsthandel Den Tijd (Leo Dohmen), Antwerp
- Private collection
- Auctioned at Christie's, London, June 30th, 1987
- Private collection (Merz collection)
- Auctioned at Christie's, London, February 20th, 2020

## Observations

Despite being dated "1932?", technical and stylistic study of the work leads us to believe that it was painted in or around 1939.

## Exhibitions

- 1989, Stuttgart, Staatsgalerie, *Salvador Dalí, 1904-1989*, 13/05/1989 - 23/07/1989, cat. no. 216
- 1989, Humlebaek, Louisiana Museum of Modern Art, *Salvador Dalí*, 16/12/1989 - 11/03/1990, cat. no. 21
- 1990, Montréal, Musée des Beaux-Arts, *Salvador Dalí*, 27/04/1990 - 29/07/1990, cat. no. 19
- 1994, Bonn, Kunst-und Ausstellungshalle der Bundesrepublik Deutschland, *¿Buñuel!, Auge des Jahrhunderts*, 04/02/1994 - 24/04/1994, p. 217
- 1996, Madrid, Museo Nacional Centro de Arte Reina Sofía, *¿Buñuel!, la mirada del siglo*, 16/07/1996 - 14/10/1996, no reference
- 2004, Barcelona, CaixaForum, *Dalí. Cultura de masses*, 05/02/2004 - 23/05/2004, cat. no. 323
- 2009, Stuttgart, Wilhelm-Hack-Museum und Kunstverein Ludwigshafen am Rhein, *Gegen Jede Vernunft. Surrealismus Paris - Prag*, 14/11/2009 - 14/02/2010, núm. cat 157
- 2009, Paris, Galeries Nationales. Grand Palais, *Une image peut en cacher une autre: Arcimboldo, Dali, Raetz*, 08/04/2009 - 06/07/2009, cat. no. 258

## Bibliography

- *Louisiana revy*, [Louisiana Revy], Humlebaek, 1989, p. 45
- *Salvador Dalí, 1904-1989*, Gerd Hatje, Stuttgart, 1989, p. 279
- *Salvador Dalí*, Musée des Beaux-Arts, Montréal, 1990, p. 55
- *¿Buñuel!, Auge des Jahrhunderts*, Kunst-und Ausstellungshalle der Bundesrepublik Deutschland, Bonn, 1994, p. 217
- Robert Descharnes, Gilles Néret, *Salvador Dalí, 1904 -1989*, Benedikt Taschen, Köln, 1994, p. 337
- *The Endless enigma : Dalí and the magicians of multiple meaning*, Hatje Cantz, Ostfildern-Ruit, 2003, p. 247
- *Dalí. Cultura de masses*, Fundació La Caixa, Fundació Gala-Salvador Dalí, Barcelona, Figueres, 2004, p. 186
- *It's all Dalí*, Museum Boijmans Van Beuningen, Rotterdam, 2005, p. 301
- Georges Beauté, *Little Dalí a l'escola*, Philippe Deléçusse, Escaldes-Engordany (Principat d'Andorra), 2005, p. 53
- *Ola Pepín! Dalí, Lorca y Buñuel en la Residencia de Estudiantes*, Fundació Caixa de Catalunya, Publicaciones de la Residencia de Estudiantes, Barcelona, Madrid, 2007, p. 159
- *Gegen Jede Vernunft. Surrealismus Paris - Prag*, Belser, Stuttgart, 2009, p. 210
- *Une image peut en cacher une autre : Arcimboldo, Dali, Raetz*, Réunion des Musées Nationaux, Paris, 2009, n. p., p. 307
- *Culture Chanel*, Museum of Contemporary Art [MoCA], Shanghai, 2011, p. 256 (indirect image) (detail)
- Idoia Murga Castro, *Pintura en danza. Los artistas españoles y el ballet : 1916-1962*, Consejo Superior de



Investigaciones Científicas (CSIC), Madrid, 2012, p. 357

- -, -, -, Marc Aufraïse, Marc Aufraïse, Caroline Barbier de reulle, Marijke Peyser-Verhaar, Astrid Ruffa, Ha, *Les Cahiers du Musée national d'art moderne [Coberta] | [Sumari] | Éditorial | Les prémices du théâtre photographique de Salvador Dalí (1932-1933) | Portraits de fantasmes | Salvador Dalí et la musique*, Éditions du Centre Pompidou, Paris, 2012, p. 99
- "LOS BALLETS DALINIANOS de Bacanal a Sacrificio", *ARTE Y PARTE*, 01/04/2013, s. l., [p. 24]
- Natalia Malinóvskaya, *[Temes amb variacions]*, Tsentri knigi Rudomino, Moscou, 2014, p. 485

## Reproduction Rights

The copyright on Salvador Dalí's works, included those that are reproduced in this Web page, is held by the Spanish State and has been granted in exclusivity to the Fundació Gala-Salvador Dalí.

Pursuant to intellectual property laws in force, the total or partial reproduction, distribution, transformation, public communication, interactively making available to the public, as well as any other exploitation, by any means, of the works included in this Web page is prohibited.

Any exploitation of Salvador Dalí's works is subject to the prior application and clearance of the relevant licence issued by VEGAP (tel. 91 532 66 32 and 93 201 03 31 ; [www.vegap.es](http://www.vegap.es)). Copyright infringement will be prosecuted according to Laws.