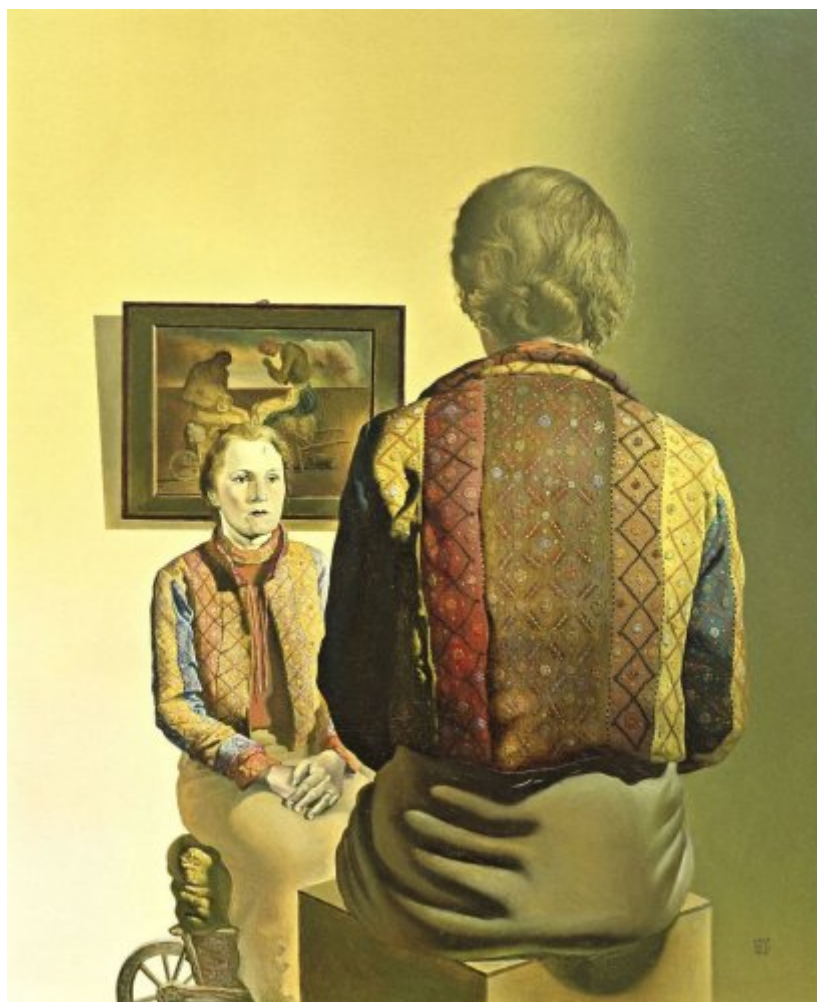




FUNDACIÓ
GALA-SALVADOR DALÍ



© Salvador Dalí, Fundació Gala-Salvador Dalí, Figueres, 2007 © 2006.
Digital image, The Museum of Modern Art, New York/Scala, Florence

Cat. no. P 399

L'Angélu de Gala (The Angelus of Gala)

Portrait of Gala

Date: 1935

Technique: Oil on wood panel

Dimensions: 32.4 x 26.7 cm



Signature: Signed and dated lower right: *GALA / DALI / 1935*

Location: The Museum of Modern Art, New York (Gift of Abby Aldrich Rockefeller)



Provenance

- Galerie Pierre Colle, Paris
- Eustache de Lorey, Paris
- Abby Aldrich Rockefeller, New York

Exhibitions

- 1941, New York, The Museum of Modern Art, *Salvador Dalí*, 19/11/1941 - 11/01/1942, cat. no. 26
- 1942, New York, The Museum of Modern Art, *20th Century Portraits*, 09/12/1942 - 24/01/1943, no reference
- 1947, Cleveland, Ohio, The Cleveland Museum of Art, *Salvador Dalí, an exhibition*, 08/10/1947 - 09/11/1947, cat. no. 11
- 1970, Rotterdam, Museum Boymans-van Beuningen, *Dalí*, 21/11/1970 - 10/01/1971, cat. no. 38
- 1973, Humlebaek, Louisiana Museum of Modern Art, *Salvador Dalí*, 06/10/1973 - 02/12/1973, cat. no. 19
- 1974, Frankfurt am Main, Städtische Galerie und Städelsche Kunstinstitut, *Salvador Dalí*, 14/03/1974 - 05/05/1974, cat. no. 11
- 2000, Nova York, The Museum of Modern Art, *Modern art despite Modernism*, 16/03/2000 - 26/07/2000, p. 128
- 2004, Venezia, Palazzo Grassi, *Dalí*, 12/09/2004 - 16/01/2005, cat. no. 143
- 2012, Paris, Centre Pompidou, *Dalí*, 21/11/2012 - 25/03/2013, p. 177
- 2013, Madrid, Museo Nacional Centro de Arte Reina Sofía, *Dalí. Todas las sugerencias poéticas y todas las posibilidades plásticas*, 27/04/2013 - 02/09/2013, p. 177

Bibliography

- Salvador Dalí, *La Conquête de l'irrationnel*, Éditions Surréalistes, Paris, 1935, frontispice
- Maurice Raynal, Salvador Dalí, Salvador Dalí, -, *Minotaure Borès | Psychologie non-euclidienne d'une photographie | Salvador Dali. L'Angélus de Gala (il·lustració) | [Zwemmer Gallery] (anunci)*, Albert Skira, Paris, 1935, n. p.
- Salvador Dalí, [L'Angelus de Gala (il.)], *Minotaure*, 10/06/1935, Paris, n. p.
- [L'Angelus de Gala (il)], *Fortune*, 31/12/1938, Chicago, Ill., n. p.
- "Twelve modern paintings", *Fortune*, 31/12/1938, Chicago, Ill., n. p.
- James Thrall Soby, *Salvador Dalí*, The Museum of Modern Art, New York, 1941, p. 56
- Rosamund Frost, *Contemporary art : the march of art from Cézanne until now*, Crown, New York, 1942, p. 179
- W. H. Cunningham, [He may not be the best but he is...], *News*, 28/02/1942, Cleveland, O., n. p. (detail)
- Stephen S. Kaiser, "Salvador Dali's search for heaven", *The Pacific Art Review*, 21/12/1942, San Francisco, p. 33
- Salvador Dalí, *Vida secreta de Salvador Dalí*, Poseidón, Buenos Aires, 1944, frontispice, il. I
- Salvador Dalí, "Portrait of Gala (il)", *New York Herald-tribune*, 24/06/1945, New York, n. p. (detail)
- "Our Psychological Warfare", *Record*, 29/12/1946, Philadelphia, Pa., n. p. (detail)
- Julio Coll, "La vida secreta de Salvador Dalí", *Liceo*, 30/09/1947, Barcelona, n. p. (detail)
- A. Oriol Anguera, *Mentira y verdad de Salvador Dalí*, Cobalto, Barcelona, 1948, p. XXI
- J.a. Gaya Nuño, "Esquema de Salvador Dalí", *Cobalto*, 15/07/1948, Barcelona, p. 42
- Juan Antonio Gaya Nuño, *Salvador Dalí*, Omega, Barcelona, 1950, il. 21
- Salvador Dalí, "The Decadence of Modern Art", *Herald-american*, 20/08/1950, Syracuse, N.y., p. 17 (detail)
- "Pintura. Caos internacional", *Semana*, 13/01/1951, Bogotá, p. 13 (detail)
- *Catalog of works by Salvador Dalí in public museum collections*, The Reynolds-Morse Foundation, Cleveland [Ohio], 1956, p. 15
- Guy Isnard, "Le complexe de l'Angélus", *Jardin Des Arts*, 30/06/1965, Paris, p. 18 (detail)



- Chagall, Dalí, Ernst, Kawade Shobo, [S.I.], 1966, il. 38
- Charlotte Lichtblau, "Art in the Mirror'-Old and New Dada Works", *Inquirer*, 27/11/1966, Philadelphia, Pa., n. p. (detail)
- Paul H. Walton, *Dali / Miró*, Tudor Publishing Company, New York, 1967, il. 16
- Robert Lebel, *L'Arte moderna : metafisica, dada, surrealismo*, Fratelli Fabbri, Milano, 1967, p. 373
- Sarane Alexandrian, *Dalí peintures*, Fernand Hazan, Paris, 1969, p. 10
- Carlton Lake, *In quest of Dalí*, G. P. Putnam's Sons, New York, 1969, n. p.
- Dalí, Museum Boymans-van Beuningen, Rotterdam, 1970, il. 38
- Dalí: *Gemälde, Zeichnungen, Objekte, Schmuck*, Staatliche Kunsthalle, Baden-Baden, 1971, p. 101
- *El Arte del Surrealismo*, Ministerio de Educación y Cultura, Montevideo, Uruguay, 1971, p. 18
- Salvador Dalí, Moderna Museet Stockholm, Stockholm, 1973/1974, p. 26
- Salvador Dalí : *a guide to his works in public museums*, The Dali Museum, Cleveland [Ohio], 1973, p. [41]
- *Ninety-three oils by Salvador Dalí : 1917-1970*, The Salvador Dali Museum, Cleveland, 1973, p. 155
- "Salvador Dalí", *Moderna Museet Stockholm*, 26/12/1973, Stockholm, p. 26
- Salvador Dalí ... *a panorama of his art*, The Salvador Dali Museum, Cleveland, 1974, p. 155
- Jacques Dopagne, *Dalí*, Fernand Hazan, Paris, 1974, il. 33 (detail)
- Salvador Dalí, Städtische Galerie und Städelsche Kunstinstitut, Frankfurt am main, 1974, p. 25
- Tadao Ogura, Robert Descharnes, *L'Art moderne du monde*, Shueisha, Tokyo, 1974, il. 36, p. 108
- Luis Romero, *Todo Dalí en un rostro*, Blume, Barcelona, Madrid, 1975, p. 277 (detail)
- *Tendenzen der Zwanziger Jahre*, Dietrich Reimer, Berlin, 1977, p. 4/67
- Dawn Ades, *Dada and surrealism reviewed*, Arts Council of Great Britain, London, 1978, p. 300
- Salvador Dalí, *Le Mythe tragique de l'Angelus de Millet : interprétation paranoïaque-critique*, Jean-Jacques Pauvert, Paris, 1978, p. 87
- Salvador Dalí: *rétrospective, 1920-1980*, Centre Georges Pompidou, Musée National d'Art moderne, Paris, 1979, p. 327
- Salvador Dalí, The Tate Gallery, London, 1980, il. XVI
- Josep Pla, Salvador Dalí (il.), *Obres de museu*, DASA, Figueres, 1981, p. 107
- Dawn Ades, *Dalí and surrealism*, Harper & Row, New York, 1982, p. 147
- Ignacio Gómez de Liaño, *Dalí*, Polígrafa, Barcelona, 1983, il. 62
- Jaume Socias, *Dalí*, Nou Art, Barcelona, 1983, p. 21 (detail)
- Clarà, Dalí, Monturiol, Pla, Vayreda, Diputació Provincial de Girona, Nou Art Thor, Girona, Barcelona, 1983, p. 21 (detail)
- Dalí, Sarpe, Madrid, 1984, il. 24, p. 88
- Sarane Alexandrian, *Dalí*, Fernand Hazan, Paris, 1985, il. 33
- Whitney Chadwick, *Women artists and the surrealist movement*, Little, Brown and Company, Boston, 1985, p. [29]
- *Grands Peintres : Dalí*, COGEDI-PRESSE, Paris, 1988, p. 10
- Dalí, Sarpe, Madrid, 1988, il. 24, p. 88
- *Ecrire sur soi en Espagne: models et ecarts*, Publications Université de Provence, Aix-en-Provence, 1988, p. 307
- Tim McGirk, *Gala ¿musa o demonio?*, Grijalbo, Barcelona, 1989, n. p.
- Salvador Dalí, 1904-1989, Gerd Hatje, Stuttgart, 1989, p. XXVI
- *Entender la pintura : Dalí*, Orbis - Fabri, Barcelona, 1989, p. 13
- Salvador Dalí, *Meisterwerke der dreissiger Jahre*, Schirmer-Mosel, München, 1989, il. 20
- *Los Dalís de Dalí: colección del museo nacional centro de arte reina Sofía*, Centro cultural, Arte contemporaneo, México D. F., 1990, p. 28
- Leticia Azcue Brea, *Salvador Dalí*, Colegio de España, Salamanca, 1990, p. 40
- Paul Moorhouse, *Dalí*, Magna Books, Wigston [Anglaterra], 1990, p. 74
- René Passeron, *Salvador Dalí*, Ars Mundi, [S.I.], 1990, p. 67
- *Dalí exhibition*, Mitsukoshi Museum of Art, Tokyo, 1991, p. 12
- Alessandr Rogin, *[Salvador Dalí : el mite i la realitat]*, Republica, Moscou, 1992, p. 65



- *Summa artis | Pintura y escultura española del siglo XX : 1900-1939*, Espasa-Calpe, Madrid, 1993, p. 493
- Marco Di Capua, *Dalí*, Librairie Gründ, Paris, 1994, p. 183
- *Dalí*, Cercle d'Art, Paris, 1994, p. 4
- Whitney Chadwick, *Mith in surrealist painting 1929-1939: Dalí, Ernst, Masson*, UMI Dissertation Service, [Michigan], 1994, p. 340
- *Salvador Dalí*, Polígrafa, Barcelona, 1994, n. p.
- Nathaniel Harris, *The Life and works of Dalí*, Parragon, [Regne Unit], 1994, p. 31
- Robert Descharnes, Gilles Néret, *Salvador Dalí, 1904 -1989*, Benedikt Taschen, Köln, 1994, p. 246
- Christopher Masters, *Dalí*, Phaidon, London, 1996, p. 79
- *New history of world art*, Shogakukan, [S.l.], 1996, il. 76
- Robert Radford, *Dalí*, Phaidon, London, 1997, p. 160
- Dawn Ades, Fiona Bradley, *Salvador Dalí: a mythology*, Tate Gallery Publishing, London, 1998, p. 66
- Pascal Bonafoux, Christophe Valentin (il.), *La Beauté comestible : à propos de Dalí et les aliments*, Plume, Paris, 1998, p. 31
- *Salvador Dalí*, Parkstone, England, 1999, p. 88 - 89
- *Warum tut das Loch in meiner Hand nicht weh?*, Tympano, München, 2000, p. 52
- Robert Stork, *Modern art despite Modernism*, The Museum of Modern Art, New York, 2000, p. 128
- *Grandes maestros de la pintura : Dalí*, Altaya, Barcelona, 2001, p. 13
- Robert Anderson, *Salvador Dalí*, Franklin Watts, London, Sydney, 2002, p. 23
- *The Portable Dalí*, Universe, New York, 2003, p. 159
- *Les Essentiels de l'art Dalí*, Ludion, Amsterdam, 2003, p. 159
- Annette Veizin, Luc Veizin, *The 20th-century muse*, Harry N. Abrams, New York, 2003, p. [111] (detail)
- Estrella de Diego, *Querida Gala : las vidas ocultas de Gala y Dalí*, Espasa, Pozuelo de Alarcón (Madrid), 2003, p. 161
- Mary Ann Caws, *Surrealism*, Phaidon, London, 2004, p. 153
- *Dalí*, Bompiani, [Milà], 2004, p. 239
- *Salvador Dalí, Josep Pla. Coincidències*, Fundació Josep Pla, Palafrugell, 2004, p. 34 (indirect image)
- *Dalí : afinitats electives*, Generalitat de Catalunya. Departament de Cultura, Barcelona, 2004, p. 79
- *Art in our time : a chronicle of the Museum of Modern Art*, Museum of Modern Art, New York, 2004, p. 21 (indirect image)
- *Salvador Dalí i les arts : historiografia i crítica al segle XXI*, Publicacions de la Universitat de Barcelona, Barcelona, 2005, p. 58
- *Salvador Dalí, Obra completa : Ensayos 2*, Destino, Fundació Gala-Salvador Dalí, Sociedad Estatal de Conmemoraciones Culturales, Barcelona, [Figueres], [Madrid], 2005, p. 478
- Catherine Millet, *Dalí et moi*, Gallimard, [París], 2005, p. 72
- *Dalí*, Unidad Editorial, [S. l.], 2005, p. 5, p. 20. p. 135, p. 180
- Jordana Mendelson, *Documenting Spain : artists, exhibition culture and the modern nation, 1929-1939*, Pennsylvania State University Press, University Park, Pa., 2005, p. 207
- *Salvador Dalí : La gare de Perpignan - Pop, Op, Yes-yes, Pompier*, Hatje Cantz, Ostfildern, 2006, p. 43
- Montse Aguer i Teixidor, Estrella de Diego, *Gala. Àlbum*, Distribucions d'Art Surrealista, [Figueres], 2007, il. 7
- Alessandro Del Puppo, *Dalí et le surréalisme*, E-ducation.it S.p.A, Florence, 2008, p. 144, p. 93 (detail)
- *Dalí*, Centre Pompidou, Paris, 2012, p. 177
- -, -, -, Marc Aufraïse, Marc Aufraïse, Caroline Barbier de reulle, Marijke Peyser-Verhaar, Astrid Ruffa, Ha, *Les Cahiers du Musée national d'art moderne [Coberta] | [Sumari] | Éditorial | Les prémices du théâtre photographique de Salvador Dalí (1932-1933) | Portraits de fantasmes | Salvador Dalí et la musique*, Éditions du Centre Pompidou, Paris, 2012, p. 64
- Roger Rothman, *Tiny surrealism : Salvador Dalí and the aesthetics of the small*, University of Nebraska, Lincoln & London, 2012, p. 165
- *Salvador Dalí*, Instituto Tomie Ohtake, Sao Paulo, 2014, p. 81
- *Dali : poetics of the small, 1929-1936*, Meadows Museum, Dallas, 2018, p. 49



Reproduction Rights

The copyright on Salvador Dalí's works, included those that are reproduced in this Web page, is held by the Spanish State and has been granted in exclusivity to the Fundació Gala-Salvador Dalí.

Pursuant to intellectual property laws in force, the total or partial reproduction, distribution, transformation, public communication, interactively making available to the public, as well as any other exploitation, by any means, of the works included in this Web page is prohibited.

Any exploitation of Salvador Dalí's works is subject to the prior application and clearance of the relevant licence issued by VEGAP (tel. 91 532 66 32 and 93 201 03 31 ; www.vegap.es). Copyright infringement will be prosecuted according to Laws.