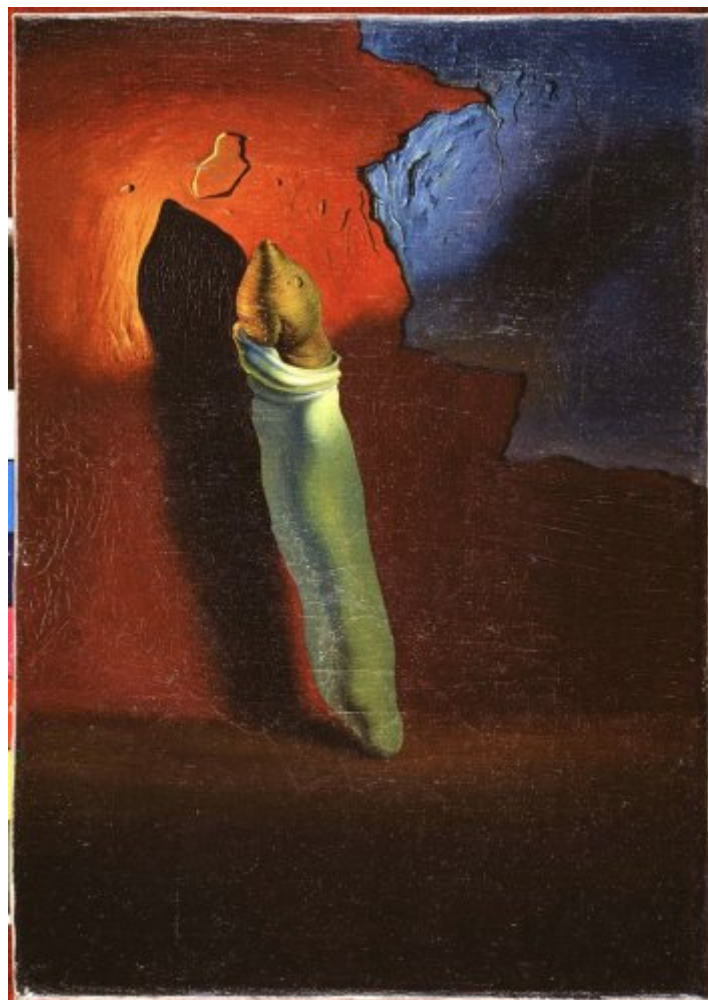




FUNDACIÓ  
GALA-SALVADOR DALÍ



© Salvador Dalí, Fundació Gala-Salvador Dalí, Figueres, 2007

## Cat. no. P 291

### Anthropomorphic Bread

|                    |  |
|--------------------|--|
| <b>Date:</b>       | 1932   |
| <b>Technique:</b>  | Oil on canvas  |
| <b>Dimensions:</b> | 24 x 16.5 cm   |
| <b>Signature:</b>  | Signed and dated lower right: <i>Gala Salvador Dalí / 1932</i> |



**Location:** Town Hall of Figueres, on permanent deposit at the Fundació Gala-Salvador Dalí, Figueres



## Provenance

- Artist's collection

## Exhibitions

- 1993, Figueres, Teatre-Museu Dalí, *Dalí, el pa*, 22/05/1993 - 31/12/1993, cat. no. 3
- 1994, Barcelona, Pia Almoïna, *L'Empordà, terra d'artistes*, 16/06/1994 - 24/07/1994, cat. no. 39
- 1999, Yamanashi, Yamanashi Prefectural Museum, *The Universe of Salvador Dalí*, 24/04/1999 - 30/05/1999, cat. no. 19
- 2001, Taipei (Taiwan), National Palace Museum, *Dalí - a genius of the XX Century*, 20/01/2001 - 20/04/2001, cat. no. 10
- 2002, [Atenes], Nicholas P. Goulandris Foundation Museum of Cycladic Art, *Salvador Dalí, [singularitat i mite]*, 23/10/2002 - 23/01/2003, cat. no. 8
- 2003, Santander, Fundación Marcelino Botín, *Dalí : un creador ligado a su tiempo*, 26/07/2003 - 14/09/2003, p. 77
- 2007, Espoo, Espoo Museum of Modern Art, *Salvador Dalí - Surrealisti! = Salvador Dalí - Surrealist!*, 03/10/2007 - 16/12/2007, p. 71
- 2009, Melbourne, National Gallery of Victoria, *Salvador Dalí : liquid desire*, 13/06/2009 - 04/10/2009, no reference

## Bibliography

- *Dalí capital de Figueres*, Ajuntament de Figueres, Figueres, 1984, il. 702
- *Exposició "Salvador Dalí, el pa"*, Fundació Gala-Salvador Dalí, Figueres, 1993, n. p.
- *Dalí, el pa*, Tusquets, Barcelona, 1993, p. 23
- *L'Empordà, terra d'artistes*, Generalitat de Catalunya. Departament de Cultura, Barcelona, 1994, p. 49
- José Luis Giménez-Frontín, *Teatre-Museu Dalí*, Tusquets, Electa, [Barcelona], Madrid, 1994, p. 34
- Robert Descharnes, Gilles Néret, *Salvador Dalí, 1904 -1989*, Benedikt Taschen, Köln, 1994, p. 179
- *Le Surréalisme et l'amour*, Gallimard, Electa, Paris Musées, [París], [S.l.], Paris, 1997, p. 166
- *The Universe of Salvador Dalí*, Fundació Gala-Salvador Dalí, Figueres, 1999, p. 46
- *Dalí - a genius of the XX Century*, China Times, [Taipei], [2001], p. 59
- *Salvador Dalí, [singularitat i mite]*, Nicholas P. Goulandris Foundation Museum of Cycladic Art, Fundació Gala-Salvador Dalí, [Atenes], Figueres, 2002, p. 37
- *Dalí : un creador ligado a su tiempo*, Fundación Marcelino Botín, Santander, 2003, p. 77
- *Les Essentiels de l'art Dalí*, Ludion, Amsterdam, 2003, p. 111
- Ricard Mas Peinado, *Universdalí*, Lunewerg, Barcelona, Madrid, 2003, p. 178
- *The Portable Dalí*, Universe, New York, 2003, p. 111
- *Salvador Dalí - Surrealisti! = Salvador Dalí - Surrealist!*, Espoo Museum of Modern Art, Fundació Gala-Salvador Dalí, Espoo, Figueres, 2007, p. 71
- *Salvador Dalí : liquid desire*, National Gallery of Victoria, Fundació Gala-Salvador Dalí, The Salvador Dalí Museum, Melbourne, Figueres, St. Petersburg (Florida), 2009, p. 106



## **Reproduction Rights**

The copyright on Salvador Dalí's works, included those that are reproduced in this Web page, is held by the Spanish State and has been granted in exclusivity to the Fundació Gala-Salvador Dalí.

Pursuant to intellectual property laws in force, the total or partial reproduction, distribution, transformation, public communication, interactively making available to the public, as well as any other exploitation, by any means, of the works included in this Web page is prohibited.

Any exploitation of Salvador Dalí's works is subject to the prior application and clearance of the relevant licence issued by VEGAP (tel. 91 532 66 32 and 93 201 03 31 ; [www.vegap.es](http://www.vegap.es)). Copyright infringement will be prosecuted according to Laws.