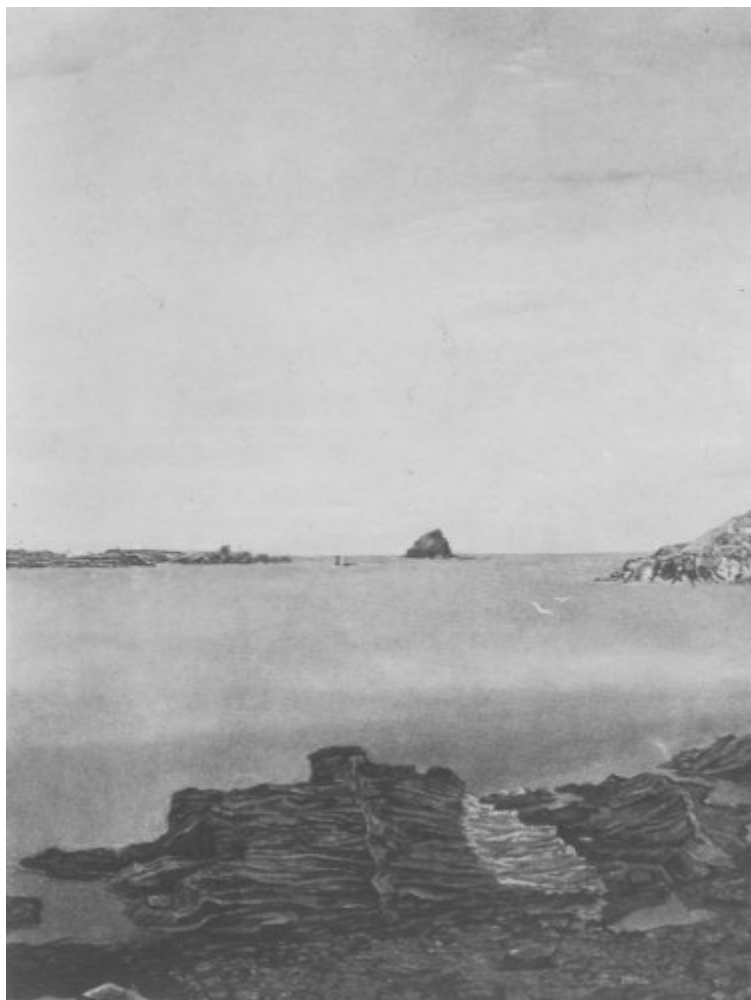




FUNDACIÓ
GALA-SALVADOR DALÍ



© Salvador Dalí, Fundació Gala-Salvador Dalí, Figueres, 2004

Cat. no. P 175

***Paisatge del port de Cadaqués* (Landscape of the Port of Cadaqués)**

Date: 1926

Technique: Oil on wood panel

Dimensions: 61 x 46 cm



Signature: Unsigned and undated

Location: Private collection



Exhibitions

- 1926, Barcelona, Galeries Dalmau, *Exposició S. Dalí*, 31/12/1926 - 14/01/1927, cat. no. 6

Bibliography

- *Salvador Dalí: rétrospective, 1920-1980*, Centre Georges Pompidou, Musée National d'Art moderne, Paris, 1979, p. 45
- Robert Descharnes, Gilles Néret, *Salvador Dalí, 1904 -1989*, Benedikt Taschen, Köln, 1994, p. 111
- Marco Di Capua, *Dalí*, Librairie Gründ, Paris, 1994, p. 76

Reproduction Rights

The copyright on Salvador Dalí's works, included those that are reproduced in this Web page, is held by the Spanish State and has been granted in exclusivity to the Fundació Gala-Salvador Dalí.

Pursuant to intellectual property laws in force, the total or partial reproduction, distribution, transformation, public communication, interactively making available to the public, as well as any other exploitation, by any means, of the works included in this Web page is prohibited.

Any exploitation of Salvador Dalí's works is subject to the prior application and clearance of the relevant licence issued by VEGAP (tel. 91 532 66 32 and 93 201 03 31 ; www.vegap.es). Copyright infringement will be prosecuted according to Laws.