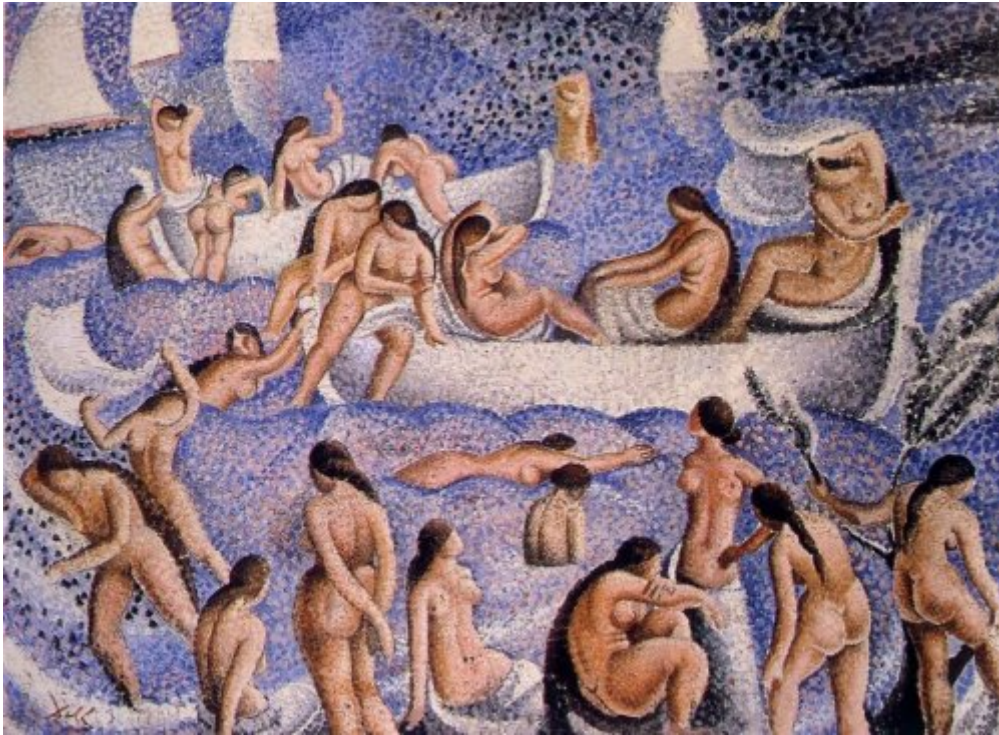




FUNDACIÓ  
GALA-SALVADOR DALÍ



© Salvador Dalí, Fundació Gala-Salvador Dalí, Figueres, 2004

## Cat. no. P 124

### Bathers of Es Llaner

- Date:** 1923
- Technique:** Oil on cardboard on plywood panel
- Dimensions:** 73.8 x 101.5 cm
- Signature:** Signed lower left corner at a later date: *Dalí*
- Location:** Fundació Gala-Salvador Dalí, Figueres



## Provenance

- Josep Ensesa
- Heirs of Josep Ensesa
- Private collection

## Exhibitions

- 1964, Tokyo, Tokyo Prince Hotel Gallery, *Salvador Dalí : exhibition - Japan 1964*, 08/09/1964 - 18/10/1964, cat. no. 8
- 1968, Charleroi, Palais des Beaux-Arts, *Salvador Dali : peintures, aquarelles, dessins, estampes, etc*, 01/03/1968 - 31/03/1968, cat. no. 6
- 1970, Rotterdam, Museum Boymans-van Beuningen, *Dalí*, 21/11/1970 - 10/01/1971, cat. no. 3
- 1983, Madrid, Museo Español de Arte Contemporáneo, *400 obras de Salvador Dalí del 1914 al 1983*, 15/04/1983 - 29/05/1983, cat. no. 62

## Bibliography

- *Salvador Dalí : exhibition - Japan 1964*, Mainichi Newspaper, Tokyo, 1964, p. 38
- *Salvador Dali : peintures, aquarelles, dessins, estampes, etc*, Palais des Beaux-Arts, Charleroi, 1968, il. 6
- *Dalí*, Museum Boymans-van Beuningen, Rotterdam, 1970, il. 3
- Luis Romero, *Todo Dalí en un rostro*, Blume, Barcelona, Madrid, 1975, p. 233
- *Dalí*, Gesemtvverband des deutschen Steinkohlenbergbaus, Essen, 1977, il. 2
- Dawn Ades, *Dalí and surrealism*, Harper & Row, New York, 1982, p. 31
- Ignacio Gómez de Liaño, *Dalí*, Polígrafa, Barcelona, 1983, il. 11
- *400 obras de Salvador Dalí de 1914 a 1983*, Obra Cultural de la Caixa de Pensions, [Madrid], 1983, p. 43
- Luis Romero, Josep Postius (il.), *Aquel Dalí*, Argos Vergara, Barcelona, 1984, p. 117 (indirect image)
- Paul Moorhouse, *Dalí*, Magna Books, Wigston [Anglaterra], 1990, p. 14
- Luis Romero, *PsicoDálico Dalí*, Mediterranea, Barcelona, 1991, p. 30
- *Salvador Dalí*, Polígrafa, Barcelona, 1994, il. 4
- Robert Descharnes, Gilles Néret, *Salvador Dalí, 1904 -1989*, Benedikt Taschen, Köln, 1994, p. 62
- *Dalí*, Cercle d'Art, Paris, 1994, il. 4
- Marco Di Capua, *Dalí*, Librairie Gründ, Paris, 1994, p. 48-49
- Ralf Schiebler, *Dalí : genius, obsession and lust*, Prestel, Munich - New York, 1996, p. 16
- Ian Gibson, *The Shameful life of Salvador Dalí*, Faber and Faber, London, 1997, il. III
- *Huellas dalinianas*, Sociedad Estatal de Conmemoraciones Culturales, Madrid, 2004, p. 27
- Maria Lluïsa Borràs, *Salvador Dalí : vida i obra d'un geni*, Columna, Barcelona, 2004, n. p.
- Silvia Borghesi, *Dalí*, Electa, Milán, 2004, p. 41
- Rafael Santos Torroella, *El Primer Dalí, 1918-1929 : catálogo razonado*, IVAM Institut Valencià d'Art Modern, Generalitat Valenciana. Conselleria de Cultura, Educació i Esport, Publicacions, [València], [València], [Madrid], 2005, p. 167
- *Dalí*, Unidad Editorial, [S. l.], 2005, p. 79
- *Salvador Dalí : La gare de Perpignan - Pop, Op, Yes-yes, Pompier*, Hatje Cantz, Ostfildern, 2006, p. 49
- Agustín Sánchez Vidal, *Salvador Dalí*, Fundación Mapfre. Instituto de Cultura, Madrid, 2007, p. 19
- Ralf Schiebler, *Dalí : the reality of dreams*, Prestel, Munich, London, New York, 2011, p. 16
- *Dalí un artista un genio*, Skira, Milano, 2012, p. 83, p. 84-85 (detail)
- William Jeffett, Juan José Lahuerta, *Picasso-Dalí, Dalí-Picasso*, Museu Picasso, Salvador Dalí Museum, Barcelona, Sant Petersburg, 2014, p. 139
- *Salvador Dalí*, Yomiuri Shimbun, Culture Promotion Department, Tokyo, 2016, p. 64-65



## **Reproduction Rights**

The copyright on Salvador Dalí's works, included those that are reproduced in this Web page, is held by the Spanish State and has been granted in exclusivity to the Fundació Gala-Salvador Dalí.

Pursuant to intellectual property laws in force, the total or partial reproduction, distribution, transformation, public communication, interactively making available to the public, as well as any other exploitation, by any means, of the works included in this Web page is prohibited.

Any exploitation of Salvador Dalí's works is subject to the prior application and clearance of the relevant licence issued by VEGAP (tel. 91 532 66 32 and 93 201 03 31 ; [www.vegap.es](http://www.vegap.es)). Copyright infringement will be prosecuted according to Laws.