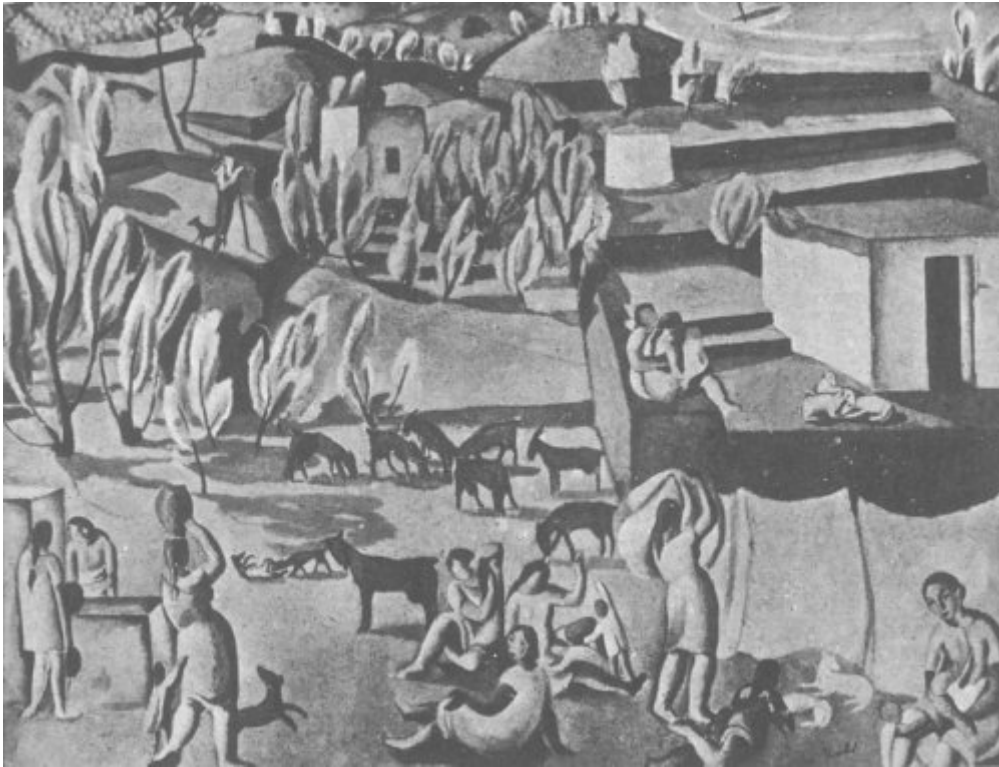




FUNDACIÓ  
GALA-SALVADOR DALÍ



© Salvador Dalí, Fundació Gala-Salvador Dalí, Figueres, 2004

## Cat. no. P 115

### Landscape with Figures

<b>Date:</b>	c. 1923
<b>Technique:</b>	Unknown
<b>Dimensions:</b>	Unknown
<b>Signature:</b>	Signed lower right: <i>Dalí</i>
<b>Location:</b>	Unknown



## Bibliography

- J. Subias, "Salvador Dalí", *Alfar*, 31/05/1924, La Coruña, p. 15
- Gabriel García Maroto, *La Nueva España 1930*, Biblos, Madrid, 1927, p. 179
- Miguel Cabañas Bravo, "El joven Dalí entre la tradición y la vanguardia artística. La amistad con Moreno Villa y el primer viaje a París y Bruselas", *Archivo Español de Arte*, 31/12/1990, Madrid, p. 179
- Robert Descharnes, Gilles Néret, *Salvador Dalí, 1904 -1989*, Benedikt Taschen, Köln, 1994, p. 65
- Rafael Santos Torroella, *El Primer Dalí, 1918-1929 : catálogo razonado*, IVAM Institut Valencià d'Art Modern, Generalitat Valenciana. Conselleria de Cultura, Educació i Esport, Publicaciones, [València], [València], [Madrid], 2005, p. 195
- Jordi Falgàs, *Dalí inèdit : els dibuixos de Montserrat*, Fundació Caixa Girona, Girona, 2007, p. 44

## Reproduction Rights

The copyright on Salvador Dalí's works, included those that are reproduced in this Web page, is held by the Spanish State and has been granted in exclusivity to the Fundació Gala-Salvador Dalí.

Pursuant to intellectual property laws in force, the total or partial reproduction, distribution, transformation, public communication, interactively making available to the public, as well as any other exploitation, by any means, of the works included in this Web page is prohibited.

Any exploitation of Salvador Dalí's works is subject to the prior application and clearance of the relevant licence issued by VEGAP (tel. 91 532 66 32 and 93 201 03 31 ; [www.vegap.es](http://www.vegap.es)). Copyright infringement will be prosecuted according to Laws.