



FUNDACIÓ  
GALA-SALVADOR DALÍ



© Salvador Dalí, Fundació Gala-Salvador Dalí, Figueres, 2017

## Cat. no. P 1139

### Study for "Perpignan Railway Station"

<b>Date:</b>	c. 1965
<b>Technique:</b>	Oil and photography on plywood panel
<b>Dimensions:</b>	49.5 x 63 cm
<b>Signature:</b>	Unsigned and undated
<b>Location:</b>	Fundació Gala-Salvador Dalí, Figueres. Dalí bequest



## Provenance

- Artist's collection

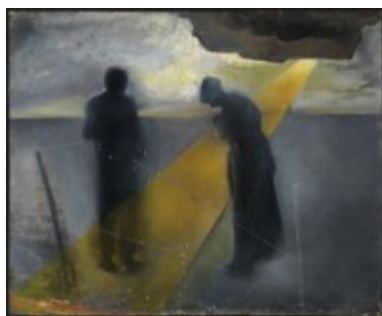
## Observations

Although traditionally this work has been associated with projects relating to "L'Àngelus" by Jean-François Millet (1814-1875), we believe that it is a study for "Perpignan Railway Station" or a first attempt of stereoscopic painting, together with the work with catalogue number 1174.

## Exhibitions

- 1996, Madrid, Museo Nacional Centro de Arte Reina Sofía, *¿Buñuel!, la mirada del siglo*, 16/07/1996 - 14/10/1996, no reference

## Related works



Cat. no. P 1174

### Study for "The Perpignan Railway Station"

c. 1965

## Reproduction Rights

The copyright on Salvador Dalí's works, included those that are reproduced in this Web page, is held by the Spanish State and has been granted in exclusivity to the Fundació Gala-Salvador Dalí.

Pursuant to intellectual property laws in force, the total or partial reproduction, distribution, transformation, public communication, interactively making available to the public, as well as any other exploitation, by any means, of the works included in this Web page is prohibited.

Any exploitation of Salvador Dalí's works is subject to the prior application and clearance of the relevant licence issued by VEGAP (tel. 91 532 66 32 and 93 201 03 31 ; [www.vegap.es](http://www.vegap.es)). Copyright infringement will be prosecuted according to Laws.